

YOSIMA

■ ■ ■ ■ ■ ■ EXPERIENCE DEPTH – ROOMS OF CLAY



 **ClayTec**[®]
Clay at its best.



EXPERIENCE

depth



Kolumba Art museum of the Archdiocese of Cologne

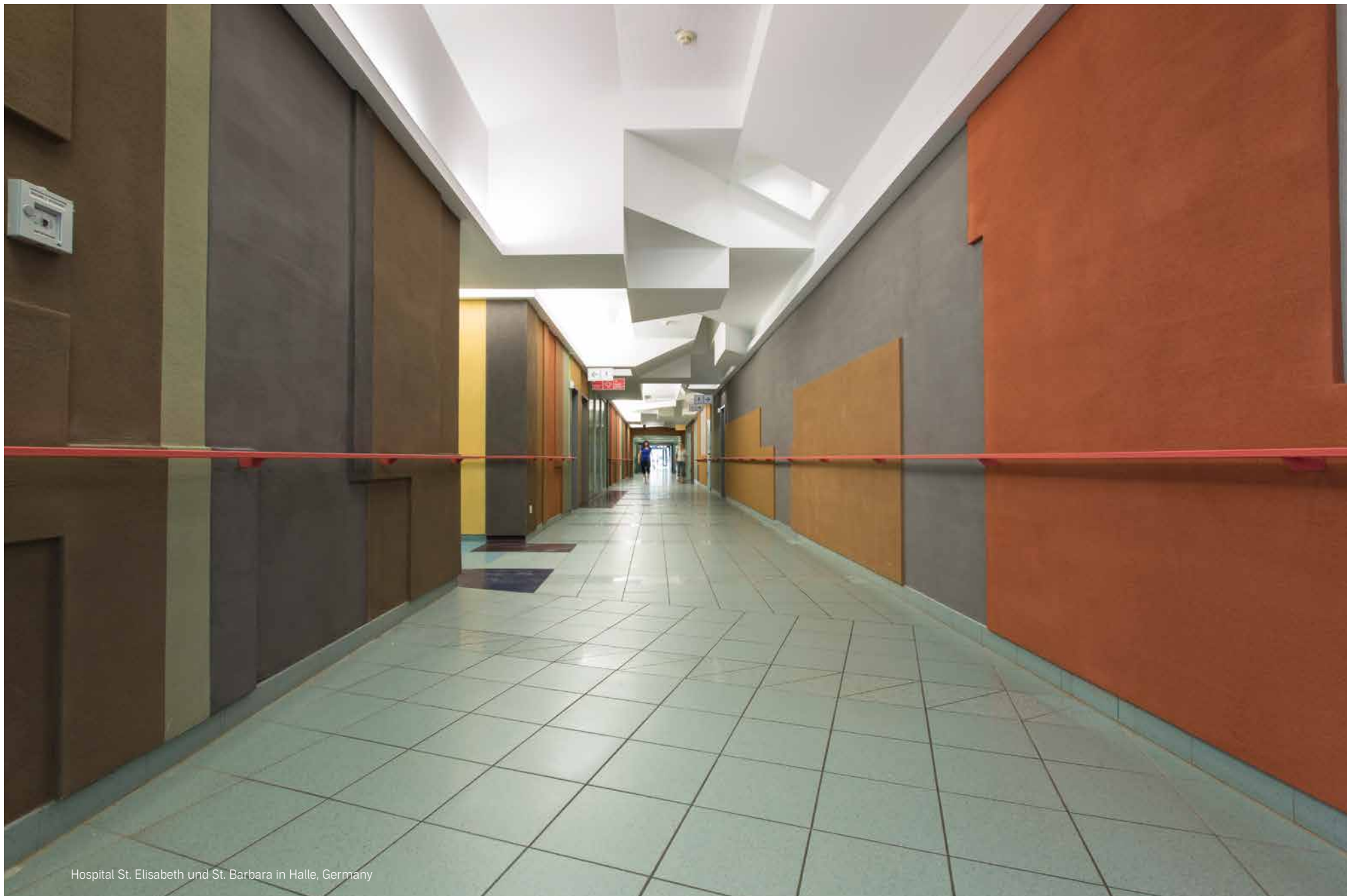


walls of **CLAY**

Beluga Shipping Company, Bremen, Germany



Ecolut Forum Seminar Centre, Engelskirchen, Germany



Hospital St. Elisabeth und St. Barbara in Halle, Germany

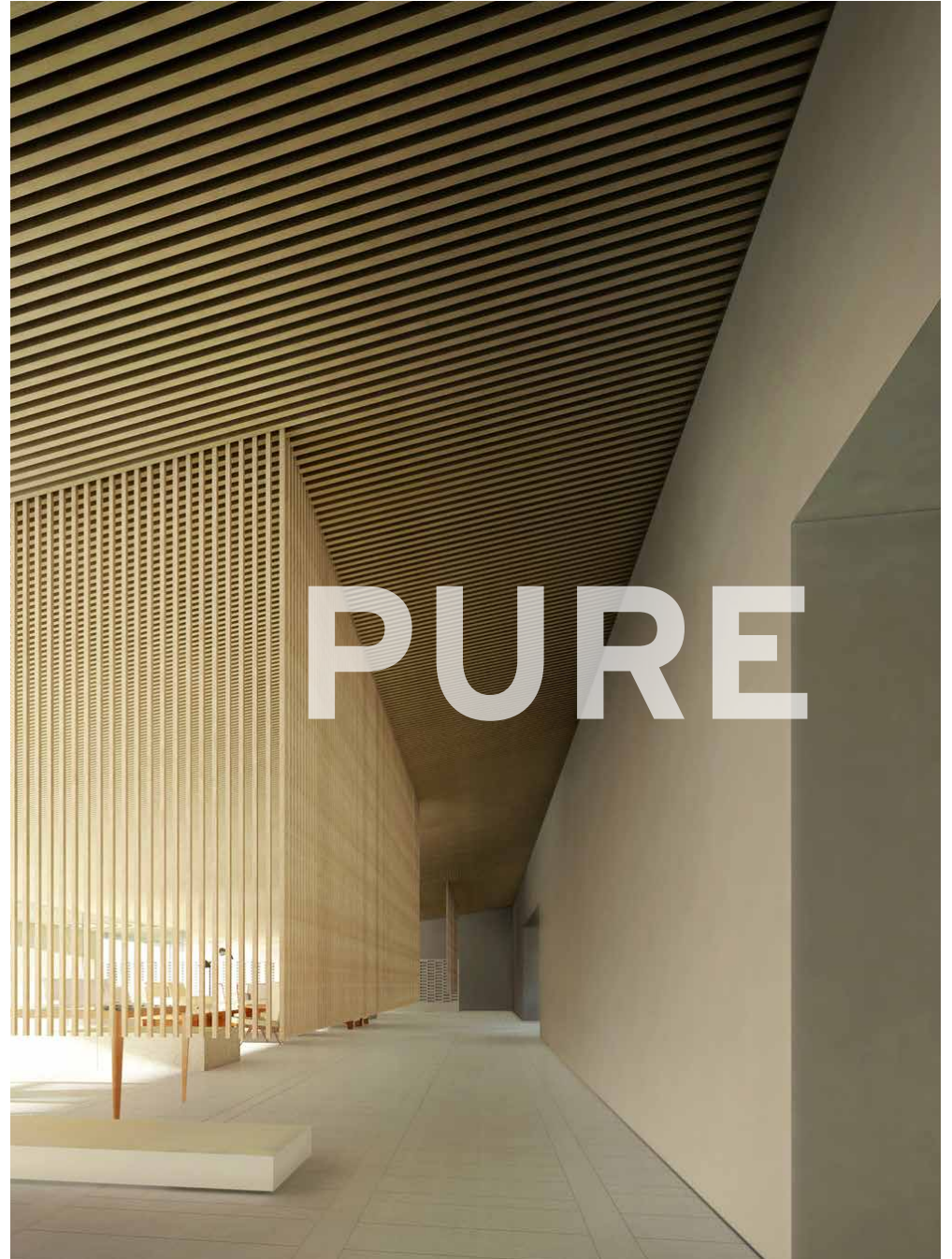




photo: Joachim Blobel

YOSIMA



146 Shades of earth

YOSIMA's depth of color does not come from artificial colors. It results from the material characteristics of the clay and earth of which it is made. The clay is both the binding agent and the color. Its subtle color variations gives surfaces a natural and authentic character.

Together, they make up a system of 146 colors for top-class interior design with clay.

photo: Joachim Blobel

Base colors

For the base colors, ClayTec uses selected clays with an exceptionally pronounced depth of color. The red coloration is a product of occurring iron oxides in the clay, the yellow of iron hydroxides. Green clay result from very fine iron particles embedded in its mineral lattice, while brown clays are a product of the presence of manganese and black of charcoal.

ClayTec offers five base colors for YOSIMA, each of which also comes in four mixtures of gradually increasing whiteness.

Red



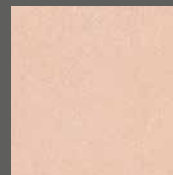
RO 0



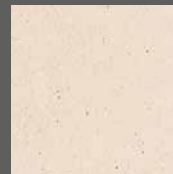
RO 1



RO 2



RO 3



RO 4

Yellow



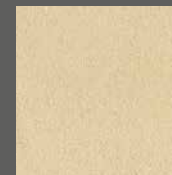
GE 0



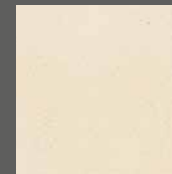
GE 1



GE 2



GE 3



GE 4

Green



GR 0



GR 1



GR 2



GR 3



GR 4

Brown



BR 0



BR 1



BR 2



BR 3



BR 4

Black



SC 0



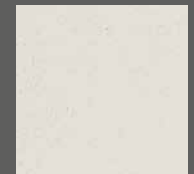
SC 1



SC 2



SC 3



SC 4

Due to the printing technique, the colors shown here may differ from the original.



Classic-color palette

Is there white clay? Yeah, kaolin. The name is derived from the Chinese place name Gaoling. Kaolin is also known as porcelain clay, from which the finest ceramics have been made for thousands of years. This is the raw material for YOSIMA White WE 0.

The other YOSIMA Classic colours have portions of colored or black tones. Old-white has been one of the most successful color shades for years. Kolumba Grey was developed together with and for the Swiss architect Peter Zumthor, used extensively at the Kolumba Museum, Cologne. Six of the Classic colors are based on the most suitable basic shades. They are particularly brightened, so that the addition of colour does not cause more than a slight shimmer.



White



Old-White



Kolumba-Grey



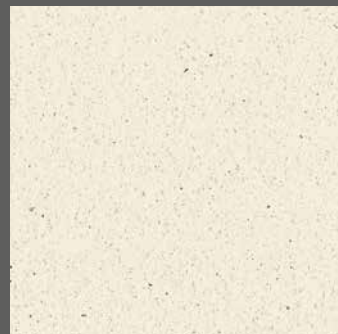
Wool-White



Alma-White



Magnolia-White



Edel-White

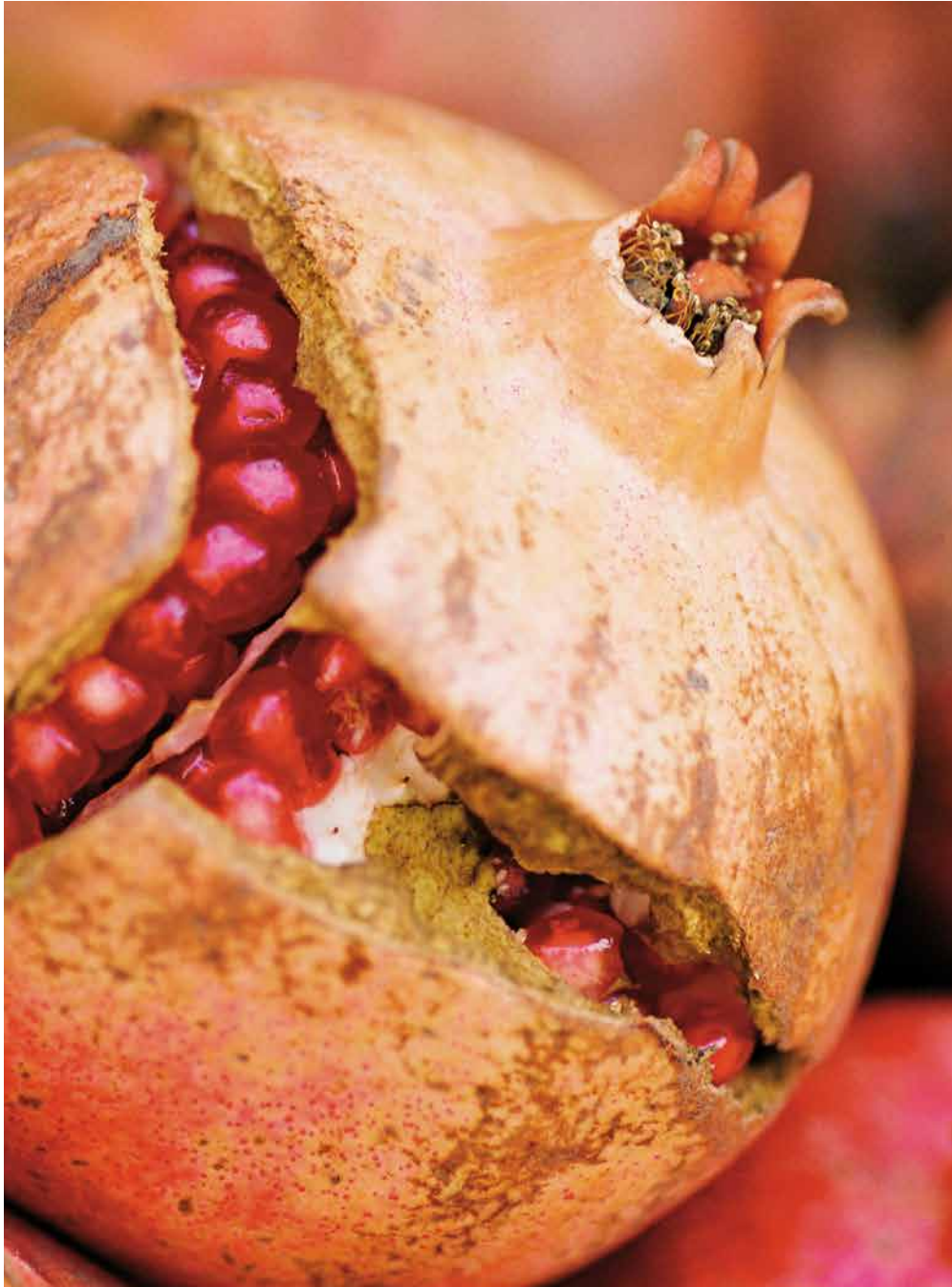


Silk-White



Lilies-White

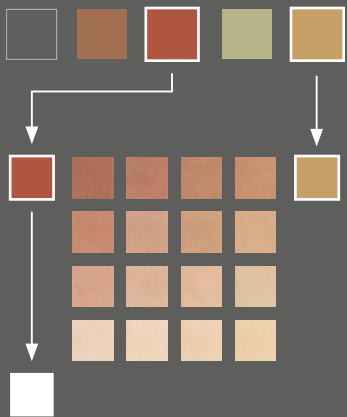
Due to the printing technique, the colors shown here may differ from the original.



color palette: indian-red

Clays and earths reflect the colors of the world. Ancient cultures were known to have used earth to decorate their living environment. The colors of the Indian Red palette radiate calm, deep warmth.

From the vast range of possible colours, ClayTec has selected seven especially attractive color palettes. Each colour palette is made from two base colors, available in four different blends. These blends are additionally available in three lighter tones.

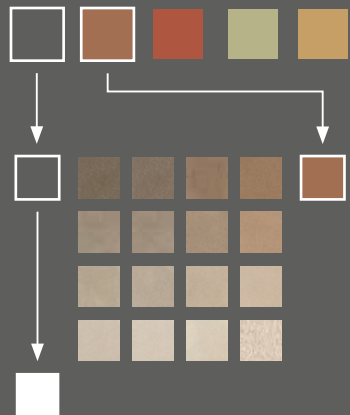


Due to the printing technique, the colors shown here may differ from the original.

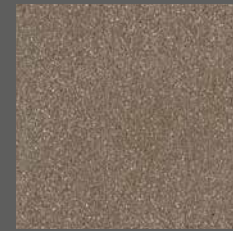


color palette: umbra-natural

Earth tones have a natural beauty that we respond to instinctively. But clay plaster is not just visually appealing. It also has properties that have a proven beneficial effect on the indoor climate, making our homes the restful centre of everyday life.



SCBR 1.0



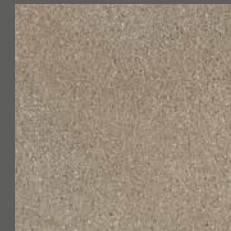
SCBR 2.0



SCBR 3.0



SCBR 4.0



SCBR 1.1



SCBR 2.1



SCBR 3.1



SCBR 4.1



SCBR 1.2



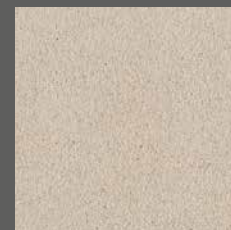
SCBR 2.2



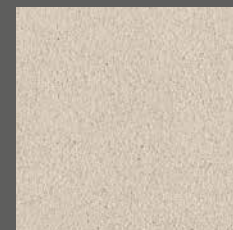
SCBR 3.2



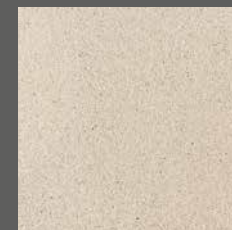
SCBR 4.2



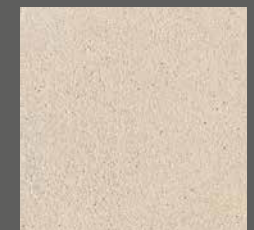
SCBR 1.3



SCBR 2.3



SCBR 3.3



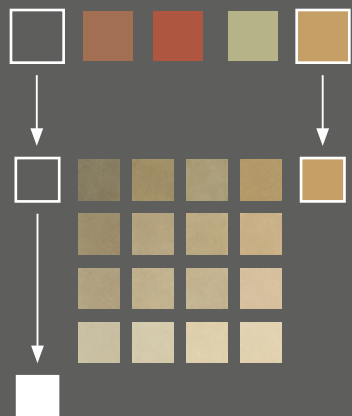
SCBR 4.3

Due to the printing technique, the colors shown here may differ from the original.



color palette: sahra-beige

In many cultures, people use clay and earth to decorate the most prestigious rooms in the house. Their perfectly crafted surface finishes are regarded as having a unique quality and lasting value. They are to be experienced, not just by themselves but also by their friends and guests.



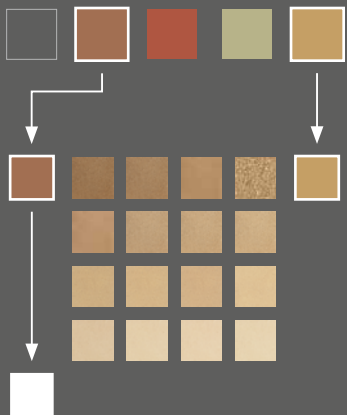
Due to the printing technique, the colors shown here may differ from the original.



color palette: gold-ochre

Gold and ochre tones are warm and soft.

As the most typical of all earth colors they unite calmness and solidity with openness and spaciousness. They communicate a sense of being rooted in the earth while simultaneously amplifying the effect of the sun to produce bright and light interiors



BRGE 1.0

BRGE 2.0

BRGE 3.0

BRGE 4.0



BRGE 1.1

BRGE 2.1

BRGE 3.1

BRGE 4.1



BRGE 1.2

BRGE 2.2

BRGE 3.2

BRGE 4.2



BRGE 1.3

BRGE 2.3

BRGE 3.3

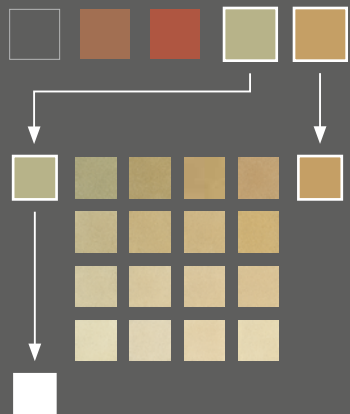
BRGE 4.3

Due to the printing technique, the colors shown here may differ from the original.



color palette: reed-yellow

Gentle greens and yellows create a sense of well-being. Together with the balanced climate of clay interiors, they provide ideal conditions for healthy living – especially important in this age of modern, energy-efficient building. And not only that: clay and earth are more environmentally friendly than almost all other building materials.

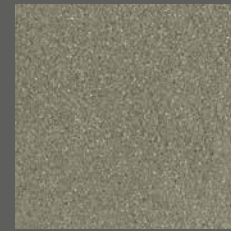
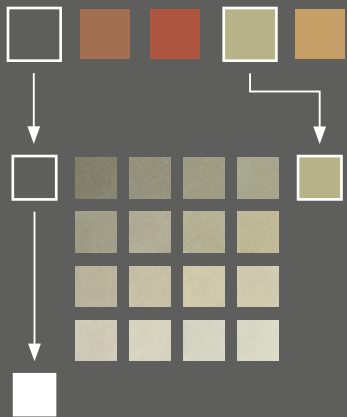


Due to the printing technique, the colors shown here may differ from the original.

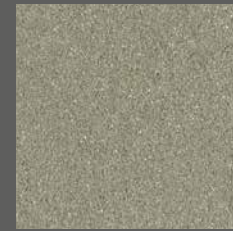


color palette: jade-green

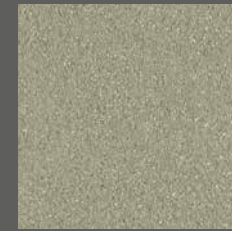
This spectrum of clays ranges from colors that are cool and soothing to those with a hint of the exotic. Green and grey are the favourite colors of designers and architects. They are sophisticated, restrained and subtle – ideal for interiors that reflect the perfect harmonies of nature.



SCGR 1.0



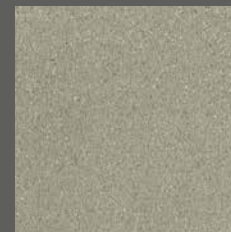
SCGR 2.0



SCGR 3.0



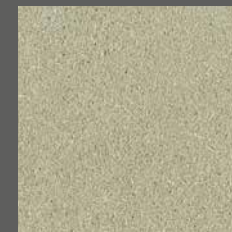
SCGR 4.0



SCGR 1.1



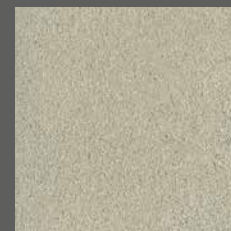
SCGR 2.1



SCGR 3.1



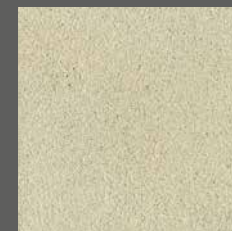
SCGR 4.1



SCGR 1.2



SCGR 2.2



SCGR 3.2



SCGR 4.2



SCGR 1.3



SCGR 2.3

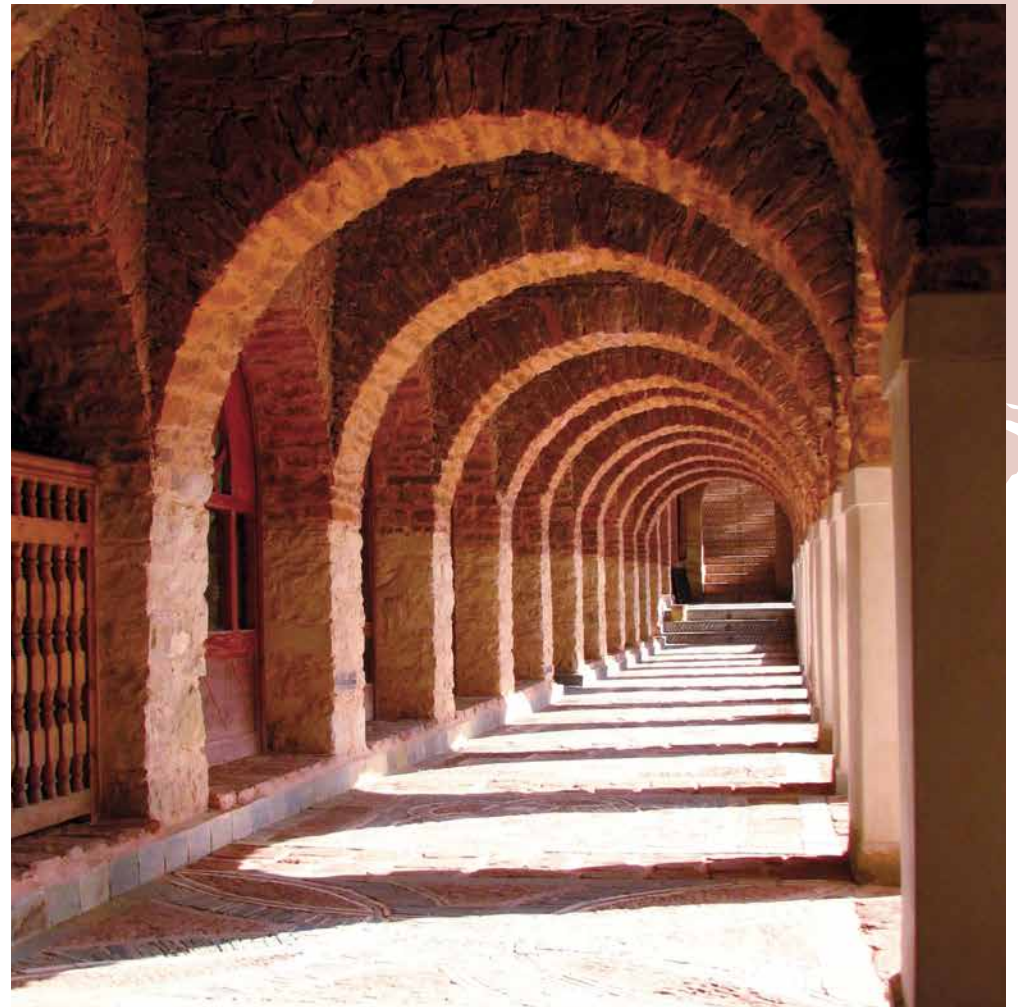


SCGR 3.3



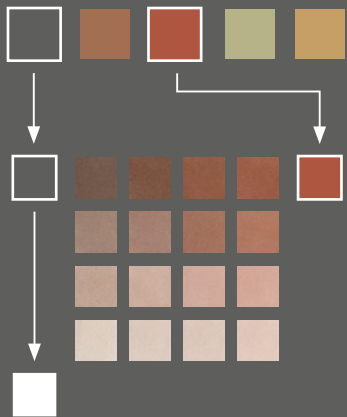
SCGR 4.3

Due to the printing technique, the colors shown here may differ from the original.



color palette: sienna-brown

Sienna brown epitomises the vitality and beauty of colored clays and earth. It is a palette that evokes the earthy warmth of natural materials soaking up the heat of the sun. It recalls the flair of southern Europe and exemplifies the sense of depth felt in rooms lined with clay plaster.



Due to the printing technique, the colors shown here may differ from the original.

YOSIMA

Type: Clay design plaster

YOSIMA clay design plaster is a colored, wall-design material consisting of clay and earth. The clay acts as both a binding and a coloring agent in one; we do not add artificial colors. YOSIMA clay design plaster is offered in 146 earth shades, including the nine classic shades. In addition, six structural additives allow various effects to be achieved. YOSIMA surfaces are elegant, vibrantly coloured and brilliant. They exude a tranquil, harmonious radiance that you'll enjoy day after day!

The surface texture is defined by the plaster constituents and the application technique. Seven textural additives are available which can be used to create different effects. They can be mixed into each of the 146 tones of colours.

Plaster textures



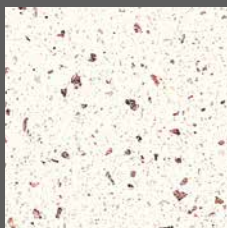
Straw



Japan



Herbs



Red stone

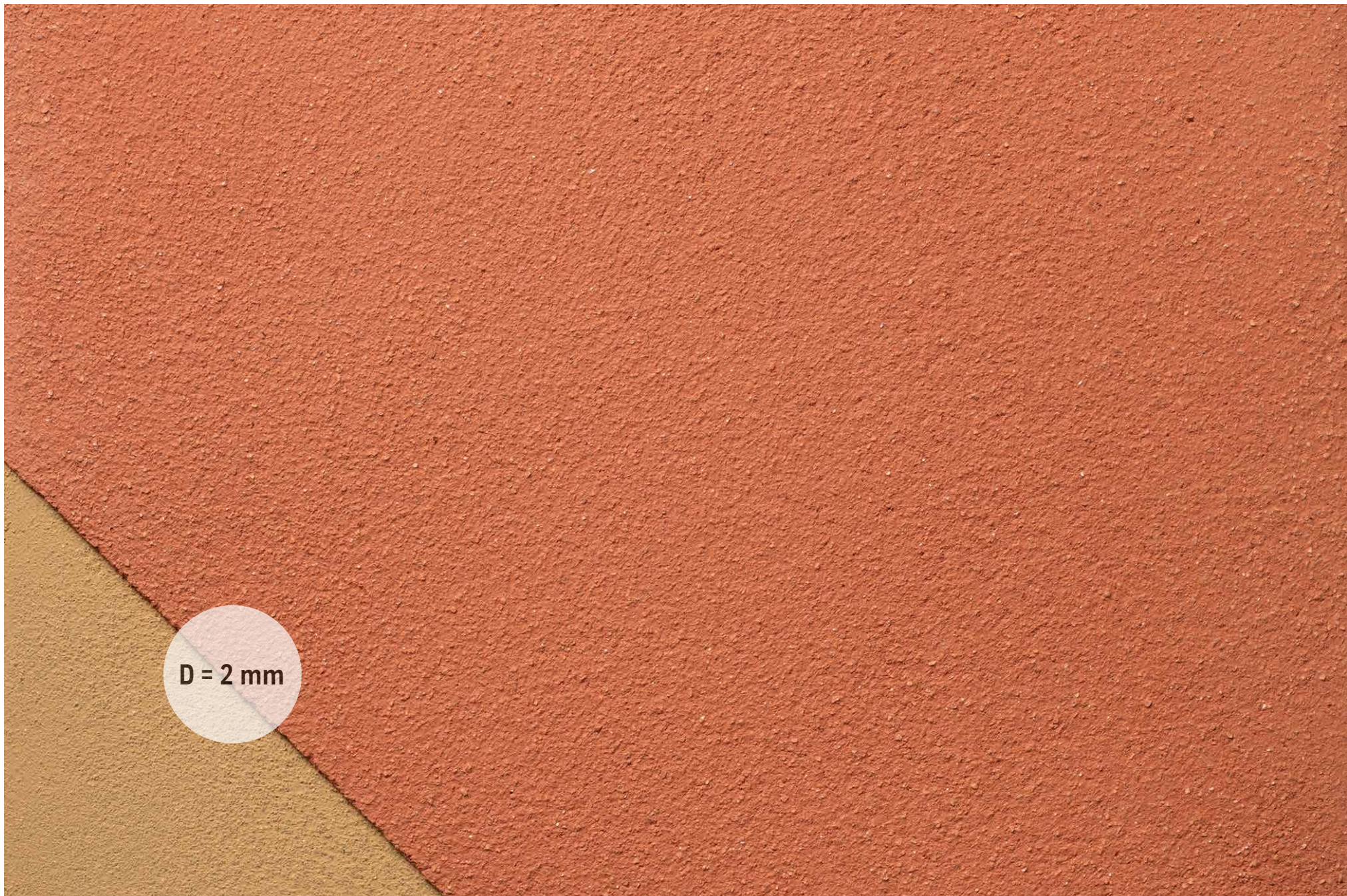


Pearl



Flash





D = 2 mm

YOSIMA

Type: Clay surfacer

YOSIMA colored clay surfacer is a smooth wall-finishing which provides a modern but classic ambience. It can be sanded, is very smooth and is even water-repellent to a certain extent. A wide range of surfaces can be created, from calm and homogeneous to vibrant and stormy. When treated with wax, the colours become even deeper and more intense. YOSIMA clay surfacer is offered in 146 earth-colored tones.

Surface effects (examples)



Red (RO 0)



Red (RO 0) marbled





**D = 0.1 to
0.2 mm**

What's the next step?



LOOKING FOR SKILLED WORKERS

Are you looking for skilled tradespeople? On our web pages you'll find more than 475 trained ClayTec skilled work partners in different specialist trades. The diamond symbol in the skilled worker contact database shows you who has experience using YOSIMA in the field of 'fine surfaces'. Some businesses can present references. We're glad to help you find the right skilled trade firm. Simply call the staff member indicated on the right for your area.

LOOKING FOR VENDORS

Our vendors hold stocks of ClayTec building materials and keep them ready for you at all times. As trained partners, they can guarantee you expert advice. Our website shows their locations. Here we also make the same offer as before: Feel free to call us! We'll make sure that you receive your goods. That particularly applies if the nearest vendor isn't located in your neighbourhood.

LOOKING FOR ARCHITECTS

Even if we can't provide architect recommendations for all areas, we still are in contact with lots of interior architects and designers with creativity and experience. Feel free to call us! We're also happy to advise the architect of your choice.

All information also available at www.claytec.de/en

We're here for you: Team International



Tobias Fleischmann

Head of International Sales

☎ +49 (0) 157 851 600 41

✉ t.fleischmann@claytec.com



Richard Heghmans

International Sales

☎ +49 (0) 2153 918-25

✉ r.heghmans@claytec.com



Anton Broze

International Sales

☎ +49 (0) 2153 918-204

✉ a.broze@claytec.com

Advice and application techniques

Technical advice

Our architects and skilled trades specialists are always on call for you during office hours, 7:45am to 5pm Mon–Thurs and 7:45am to 3pm Fri. Select the telephone number of the contact partner for your region indicated on the left, or send us an e-mail. If it's a matter of complex issues, our skilled work and planning support person will also be glad to offer you an appointment on-site.

Worksheets

The Fine-finish surfaces worksheet provides detailed, practical, non-product-specific information on preparing backgrounds, surface design and working with YOSIMA clay designer plaster, clay surfacer and ClayFix coating materials.

The complete list of worksheet titles:

Fine-finish surfaces

Clay plasters

Timber-frame construction

Interior insulation

Ecological drywalls in system

Application video

The drywall construction videos show you the most important manoeuvres. See for yourself: clay drywall construction is easy to handle. Our YouTube channel provides further videos on working with YOSIMA clay designer plaster and internal insulation.



Tender texts

To help planners, we have created tender texts for all techniques. The list also shows important preliminary and subsidiary tasks, to draw attention to technically or financially relevant work. Our website automatically directs you to the www.ausschreiben.de platform of Orca Software. The texts can be imported into all AVA programs.

MACHINE TECHNOLOGY

Skilled workers apply our clay plasters with plastering machines. We have tested the most important brands for you. You'll find the most important plastering machine manufacturers, plus contact details and competent contact partners at claytec.de/en/application-technology/machine-technology/

Wall panel heating

Wall panel heating consists of pipe registers plastered into the clay mortar or embedded in the clay in other ways. Thanks to their low surface temperature, the heat is mainly emitted by radiation. This technique avoids the need for radiators. You'll find the most important system manufacturers, plus contact details and technical information on the heating systems at claytec.de/en/application-technology/surface-heating/

All the pages are also available for download at claytec.de/en/application-technology/downloads/

Your ClayTec dealer:



Tested according to strict pollutant and emission requirements by ECO-INSTITUT, Cologne



ClayTec GmbH & Co. KG

Nettetal Straße 113-117
D-41751 Viersen-Boisheim
Germany

Telephone: +49 (0)2153 918-0
service@claytec.com
claytec.de

Advice in Austria:

ClayTec Lehmbaustoffe GmbH

Stranach 6
A-9842 Mörttschach
Telephone: +43 (0)676 430 45 94
info@claytec.at
claytec.at