

**CLAYTEC**<sup>®</sup>

Building with Clay

YOSIMA

CLAYFIX

Clay plaster

Drywall construction

Clayboards

Wooden fibre boards

## **Product catalogue**

Timber-frame restoration

Lime renders

Interior insulation

Masonry

Rammed earth

Japanese trowels

Support

---

# CLAYTEC products according to trade



## Fine-finish surfaces

Page 3-5

## Primers

Page 6



## Clay plasters

Page 7-12



## Clay drywall construction

Page 13-16



## Timber-frame restoration

Page 17-20



## Interior insulation with clay

Page 21-24



## Masonry und rammed earth

Page 25-28

## Notes

Page 28

## Tools: Japanese trowels

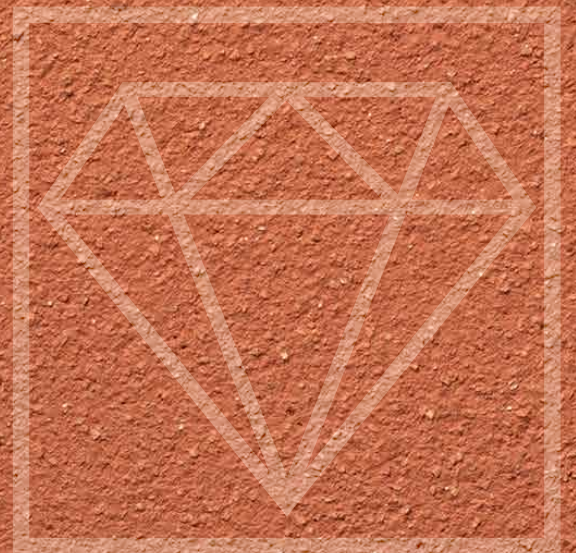
Page 30

## Quantity tables

Page 31

---

# Fine-finish surfaces



# YOSIMA Clay designer plaster

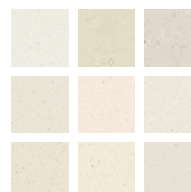
Coloured clay plaster for interiors YOSIMA clay design plaster is coloured wall surfacing material consisting of clay and earth. The clay is both a binder and a colouring agent in one, we do not add any extra pigments or artificial colours. YOSIMA is offered in 146 earth-colour tones. In addition, textural effects can be achieved with 6 different additives. YOSIMA surfaces are elegant, with brilliant, rich colours. Their calm and harmonious appearance can be enjoyed each and every day!



Item no.	Item description	Delivery form, product features
40. ...**	YOSIMA Clay designer plaster	500 kg big bag, 300L plaster mortar, 150m <sup>2</sup> area at D=0.2cm Price group 1: Base colours without textural additives (*20)
		20 kg bucket, 32/europallet, 12L plaster mortar, 6m <sup>2</sup> area at D=0.2cm Price group 1: Base colours without textural additives (*20)
		2.0kg bag, 1.2L plaster mortar, 0.6m <sup>2</sup> area at D=0.2cm Price group 1: Base colours without textural additives
		500 kg big bag, 300L plaster mortar, 150m <sup>2</sup> area at D=0.2cm Price group 2: Mixed colours without textural additives (*20)
		20 kg bucket, 32/europallet, 12L plaster mortar, 6m <sup>2</sup> area at D=0.2cm Price group 2: Mixed colours without textural additives (*20)
		500 kg big bag, 300L plaster mortar, 150m <sup>2</sup> area at D=0.2cm Price group 3: Texture Red Stone/Straw/Japan/Herbs (*20)
		20 kg bucket, 32/europallet, 12L plaster mortar, 6m <sup>2</sup> area at D=0.2cm Price group 3: Texture Red Stone/Straw/Japan/Herbs (*20)
		500 kg big bag, 300L plaster mortar, 150m <sup>2</sup> area at D=0.2cm Price group 4 Texture Pearl (*20)
		20 kg bucket, 32/europallet, 12L plaster mortar, 6m <sup>2</sup> area at D=0.2cm Price group 4: Texture Pearl (*20)
		500 kg big bag, 300L plaster mortar, 150m <sup>2</sup> area at D=0.2cm Price group 5: Texture Flash (*20)
		20 kg bucket, 32/europallet, 12L plaster mortar, 6m <sup>2</sup> area at D=0.2cm Price group 5: Texture Flash (*20)

- Brilliant surface
- 146 natural colour tones
- 7 surface texture variants
- No pigments or artificial colours
- No yellowing or fading

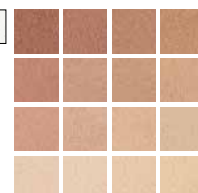
Classic-colour palette



Basic colours/with white



Colour palette: Indian Red



Colour palette: Natural Umbra



Colour palette: Sahara Beige



Colour palette: Gold Ochre



Colour palette: Reed Yellow



Colour palette: Jade Green



Colour palette: Sienna Brown



\*\*146 colour variants, 7 surface textures, for article numbers see the list YOSIMA ARTICLE plaster [www.claytec.de/yosima/ARTIKELPutz.html](http://www.claytec.de/yosima/ARTIKELPutz.html) - \*Please refer to the instructions on page 28.

## YOSIMA clay design plaster textural additives for individual addition

Item no.	Article description	Delivery form, product features
32.111.ST	Textural additive Straw	126 g bag, straw fibres for a 20 kg bucket (*12)
32.151.JA	Textural additive Japan	124 g bag, sisal fibres for a 20 kg bucket (*12)
32.171.HE	Textural additive Herbs	62 g bag, herb fibres for a 20 kg bucket (*12)
32.121.RS	Textural additive Red Stone	1,672 g bag, granite grains for a 20 kg bucket (*12)
32.141.PE	Textural additive Pearl	314 g bag, pearl grains for a 20 kg bucket (*12)
32.131.FL	Textural additive Flash	314 g bag, glitter grains for a 20 kg bucket (*12)

\*Please refer to the notes on page 28.



## YOSIMA colour clay surfacer

Colour clay smooth surfacer on clay topcoat plaster and other sufficiently smooth surfaces. YOSIMA colour clay surfacer is a smooth wall finishing which provides a modern and classy ambience. It can be sanded, is very smooth and is even water-repellent to a certain extent. Surfaces that are calm and homogeneous as well as lively and cloudy are all possible. When treated with wax, the colours become even deeper and more intense. YOSIMA colour clay surfacer is offered in 146 earth-coloured tones.



Item no.	Article description	Delivery form, product features
50. ...**	YOSIMA Colour clay surfacer	5 kg bucket, 33/europallet, 6L filler, approx. 6.5m <sup>2</sup> area with 2 coats (*22)
		1.0 kg bag, 1.2L filler approx. 1.3m <sup>2</sup> area with 2 coats

- Smooth, refined, elegant
- Matt or glossy possible
- 146 YOSIMA colour shades

\*\*146 colour variants, for article numbers see the list YOSIMA ARTICLE Filler, [www.claytec.de/yosima/ARTIKELPutz.html](http://www.claytec.de/yosima/ARTIKELPutz.html) - \*Please refer to the notes on page 28.

## CLAYFIX Clay Paint

Clay coating materials without and with grain for interior surfaces. CLAYFIX clay direct clay colour provides an easily achievable clay finish. The coating is ecologically friendly, free of solvents and breathable. The dry matter is only mixed with water. The mixture can be applied to all paintable surfaces in a crosswise manner with a fine brush, broad brush or roller. CLAYFIX is offered in 146 earth colours analogous to YOSIMA colour palette, plus 2 structural additives.



Item no.	Article description	Delivery form, product features
19. ...**	CLAYFIX clay paint, 10 kg	32 buckets/europallet approx. 60m <sup>2</sup> area depending on substrate (*22)
	CLAYFIX clay paint, 1.5 kg	1.5 kg bag approx. 9m <sup>2</sup> area depending on substrate

- Affordable, simple and quick
- Smooth or grained possible
- The ecologically friendly coating
- 146 colour shades analog to YOSIMA
- 3 surface texture variants

\*\*146 colour variants, 3 surface textures, for article numbers see the list CLAYFIX ARTICLES, [www.claytec.de/CLAYFIX/ARTIKEL.html](http://www.claytec.de/CLAYFIX/ARTIKEL.html)- \*Please refer to the notes on page 28.

### CLAYFIX Clay Paint structural additives for single addition

Item no.	Article description	Delivery form, product features
32.200.FK	structural additives fine-grain	3.16 kg bag, marble sand 0 - 0.5mm for a 10kg bucket (*12)
32.210.GK	structural additives coarse-grain	3.16 kg bag, marble sand 0 - 0.5mm for a 10kg bucket (*12)

\*Please refer to the notes on page 28.

## Deep sealer and primers

**Deep sealer and binder applied** before clay plaster mortar or the adhesion of dry plaster and interior insulation panels for bonding basecoats e.g. of lime or cement before sanding.



Item no.	Article description	Delivery form, product features
13.405	DEAP SEALER and binder, 10L canister	60 canisters/europallet, liquid, approx. 50 m <sup>2</sup> /canisters depending on substrate (*E)
13.400	DEAP SEALER and binder, 1L bottle	6 bottles/box, liquid, approx. 5 m <sup>2</sup> depending on substrate (*2)

- For binding clay basecoats

**RED primer:** Liquid primer with a coarse grain for application underneath coarse clay plaster mortars. RED provides grip and plaster adhesion on smooth and/or poorly absorbing surfaces, such as high-performance insulating brick, KS elements, concrete, lime and gypsum-based plasters, old dispersion coatings (solid but porous), old epoxy resin plasters and others.



Item no.	Article description	Delivery form, product features
13.435	RED primer, coarse, 10L bucket	24 buckets/europallet liquid, grains of 0-1.8 mm, approx. 30 m <sup>2</sup> depending on substrate (*A)
13.430	RED primer, coarse, 5L bucket	56 buckets/europallet liquid, grains of 0-1.8 mm, approx. 15 m <sup>2</sup> depending on substrate (*A)

- Coarse grain  
- As a substrate for clay coarse plasters

**YELLOW primer:** Liquid primer with fine grains for application underneath fine clay topcoat plaster and YOSIMA clay design plaster. YELLOW provides fine-grained grip, reduces and equalizes the absorbency and protects plasterboard and other panelling against moisture from the clay plaster application.



Item no.	Article description	Delivery form, product features
13.425	YELLOW primer, fine, 10L bucket	24 buckets/europallet liquid, grains of 0-1 mm, approx. 50 m <sup>2</sup> depending on substrate (*A)
13.420	YELLOW primer, fine, 5L bucket	56 buckets/europallet liquid, grains of 0-1 mm, approx. 25 m <sup>2</sup> depending on substrate (*A)

- Fine-grain  
- As a substrate for clay fine plasters

**WHITE primer:** Liquid primer without grains for application underneath CLAYFIX Clay Paint and YOSIMA colour clay surfacer coating materials. Substrates may be clay plasters or others as needed. WHITE ensures that the clay plaster does not become mixed with and loosened by any coating. A solid substrate is formed for other repeated coats.



Item no.	Article description	Delivery form, product features
13.415	WHITE primer, smooth, 10L bucket	24 buckets/europallet liquid, approx. 100 m <sup>2</sup> depending on substrate (*A)
13.410	WHITE primer, smooth, 5L bucket	56 buckets/europallet liquid, approx. 50 m <sup>2</sup> depending on substrate (*A)
13.410	WHITE primer, smooth, 1L bucket	liquid, approx. 10 m <sup>2</sup> depending on substrate

- Smooth  
- As a substrate for clay coatings and colour clay surfacer

\*Please refer to the notes on page 28.

# Clay plasters



## Clay undercoat plaster with straw

Single or multilayer basecoat plaster for interior application. For 25 years now clay undercoat plaster with straw has been the classic for applying thick layers, e.g. on rough masonry, for wall space heaters or for restoration work in historical buildings. Up to 35 mm can be applied in a single operation. The material is highly workable, it sticks even above the head, and is suitable for gap filling and much more. Clay undercoat plaster with straw is also a substrate for all coarse and fine CLAYTEC clay topcoat plasters.

**Dry mortar of all varieties never expires and can also be used with plastering machines.**



Item no.	Article description	Delivery form, product features
05.001	Clay basecoat plaster with straw, NATURALLY MOIST 1.0t	DIN 18947, 1.0t big bag, sand 0-2mm, straw 30 mm, 600L clay mortar, 40m <sup>2</sup> area with D=1.5cm (*B)
05.201	Clay basecoat plaster w/ straw, NATURALLY MOIST SMALL	DIN 18947, 0.5t big bag, sand 0-2mm, straw 30 mm, 300L clay mortar, 20m <sup>2</sup> area with D=1.5cm (*B)
05.002	Clay basecoat plaster with straw, DRY in big bag	DIN 18947, 1.0t big bag, sand 0-2mm, straw 30 mm, 625L clay mortar, 42m <sup>2</sup> area with D=1.5cm (*21)
10.110	Clay basecoat plaster with straw, bagged goods	DIN 18947, 25 kg bag, 48/europallet, sand 0-2mm, straw 30mm, 16.7L clay mortar, 1.1m <sup>2</sup> area with D=1.5cm (*C)

\*Please refer to the notes on page 28.

- The clay basecoat classic
- Multi-functional
- Easiest to work with

## Lightweight clay insulation plaster

Single or multilayer basecoat plaster for interior application. Why waste the space under your interior insulation panels? In comparison to normal clay plaster mortars, layers of clay insulating plaster markedly improve the transport of heat through the wall. Clay insulating plaster is also a problem solver for many other scenarios, e.g. for bay windows or minimal insulation only in certain areas. One can apply up to 35 mm in one operation. The plaster is suitable as a substrate for all coarse and fine CLAYTEC clay topcoat plasters.



Item no.	Article description	Delivery form, product features
05.036	Lightweight clay INSULATION PLASTER, NATURALLY MOIST 0.9t	0.9t big bag, pumice 0-5mm, plant fine fibres, straw, 675L clay mortar, 45m <sup>2</sup> area with D=1.5cm (*B)
05.236	Lightweight clay INSULATION PLASTER, NATURALLY MOIST SMALL	0.45t big bag, pumice 0-5mm, plant fine fibres, straw, 340L clay mortar, 23m <sup>2</sup> area with D=1.5cm (*B)

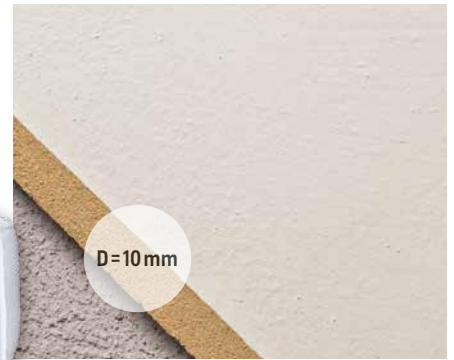
\*Please refer to the notes on page 28.

- Lightweight and thermally insulating
- For patched minimal insulation
- As a substrate for interior insulation panels



## Clay plaster Mineral 20

Single- or multi-layered basecoat and topcoat plaster for indoor use. Clay plaster Mineral is an basecoat and topcoat plaster in one product. It contains angular fractured sand to provide strength. After application, the mortar contracts quite quickly and be processed further after a short period of time. As a basecoat plaster it is suitable for all coarse and fine CLAYTEC topcoat plasters, e.g. YOSIMA. As a rough or even smooth topcoat plaster with a mineral, straw-free surface texture it can be applied using the CLAYFIX clay coating material system.



Item no.	Article description	Delivery form, product features
05.030	Mineral clay plaster 20 NATURALLY MOIST 1.0t	DIN 18947, 1.0t big bag, sand 0-2.8mm, 500 L clay mortar, 50 m <sup>2</sup> area with D=1.0cm (*B)
05.230	Mineral clay plaster 20 NATURALLY MOIST SMALL	DIN 18947, 0.5t big bag, sand 0-2.8mm, 250 L clay mortar, 25 m <sup>2</sup> area with D=1.0cm (*B)
05.032	Mineral clay plaster 20 DRY	1.0t big bag, sand 0-2.8mm, 540 L clay mortar, 54 m <sup>2</sup> area with D=1.0cm (*21)
10.130	Mineral clay plaster 20 Bagged goods	25 kg bag, 48/europallet, sand 0-2.8mm, 13,5 L clay mortar, 1,35 m <sup>2</sup> area with D=1.0cm (*C)

- Basecoat and topcoat plaster.
- Without organic components
- Dries quickly

\*Please refer to the notes on page 28.

## Clay plaster SanReMo

Single-layer basecoat and topcoat plaster for indoors, especially suitable for irregular surfaces encountered in renovation, restoration and modernisation work. Clay plaster SanReMo is a mortar for moderately thick application. It can be applied very thinly at 3mm or quite thickly at 10mm. Multi-layered application is also possible. The mortar also tolerates non-uniformly absorbent or only poorly absorbent plaster substrates. This is helped by the porous water-absorbent pumice component as well as the fine bamboo fibre component. The fibre is not visible on the surface. As a basecoat plaster, clay plaster SanReMo is suitable for all fine CLAYTEC clay topcoat plasters, e.g. YOSIMA. It can also be easily applied using the CLAYFIX clay coating material system.



Item no.	Article description	Delivery form, product features
05.810	Clay Plaster SanReMo DRY in big bag	DIN 18947, 800kg big bag, sand/pumice 0-1.5mm, 544 L clay mortar, 9 m <sup>2</sup> area with D=0.6cm (*21)
10.810	Clay Plaster SanReMo Bagged goods	DIN 18947, 2 kg bag, 48/europallet, sand/pumice 0-1.5mm, 17 L clay mortar, 2.8 m <sup>2</sup> area with D=0.6cm (*C)

- Single coat on all substrates
- Basecoat and topcoat plaster, D 6 mm
- Also possible as thin and thick coats

\*Please refer to the notes on page 28.

## Clay topcoat plaster coarse with straw

Single-layer topcoat plaster for indoors. For use on clay basecoat plaster, sufficiently level masonry and other solid materials. The application thickness is between 5 mm and 10 mm. Clay topcoat with straw is a mortar for every surface texture, from rustic to smooth. The short straw pieces serve only a decorative purpose, leaving the plaster easily workable and smooth, even for novices. The plaster is painted with CLAYFIX clay paints. The dry mortar keeps indefinitely and can also be used with plastering machines.



Clay topcoat plaster coarse with straw, shown with Clayfix clay paint WE0

- The clay topcoat classic
- Rustic straw surface

Item no.	Article description	Delivery form, product features
05.010	Clay topcoat plaster coarse with straw, NATURALLY MOIST 1.0t	DIN 18947, 1.0t big bag, sand 0-2mm, straw 10mm, 600L clay mortar, 60m <sup>2</sup> area with D=1.0cm (*B)
05.210	Clay topcoat plaster coarse with straw, NATURALLY MOIST SMALL	DIN 18947, 0.5t big bag, sand 0-2mm, straw 10mm, 300L clay mortar, 30m <sup>2</sup> area with D=1.0cm (*B)
05.012	Clay topcoat plaster coarse with straw, DRY in big bag	DIN 18947, 1.0t big bag, sand 0-2mm, straw 10mm, 625L clay mortar, 63m <sup>2</sup> area with D=1.0cm (*21)
10.112	Clay topcoat plaster coarse with straw, Bagged goods	DIN 18947, 25kg bag, 48/europallet, sand 0-2mm, straw 10mm, 16.7L clay mortar, 1.7m <sup>2</sup> area with D=1.0cm (*C)

\*Please refer to the notes on page 28.

## Clay topcoat plaster coarse light-coloured

Clay topcoat plaster coarse light-coloured is manufactured from a particularly light-coloured clay. If desired, you can leave this clay topcoat plaster as a finished surface in and of itself. We are happy to advise you on this. Otherwise, only a finishing coat is required.



Clay topcoat plaster coarse light-coloured shown applied directly to masonry

- Simply brush on
- Also suitable as a finish
- Easy to repair

Item no.	Article description	Delivery form, product features
05.016	Clay topcoat plaster coarse light-coloured with straw, DRY in big bag	1.0t big bag, sand 0-2mm, straw 10mm, 600L clay mortar, 100m <sup>2</sup> area with D=0.6cm (*21)
10.115	Clay topcoat plaster coarse light-coloured with straw, Bagged goods	25kg bag, 48/europallet, sand 0-2mm, straw 10mm, 15L clay mortar, 2.5m <sup>2</sup> area with D=0.6cm (*C)

\*Please refer to the notes on page 28.

## Clay colour plaster coarse with straw

Single-layered, coloured topcoat plaster for indoors. The material is usually applied as a 7-10 mm thick layer. It is also suitable for substrates that are too uneven for the application of a clay thin layer finish. The thick application also allows the formation of coarse-textured surfaces. Clay colour plaster coarse with straw is neither further coated nor painted. This does not just save on costs: In rooms the clay surface can be experienced purely and on a one-to-one basis, and in 36 colour variants.



- Single-coat clay plaster requiring no further coating
- For creative coloured plaster surfaces

Item no.	Article description	Delivery form, product features
05. ...**	Clay COLOUR PLASTER coarse, NATURALLY MOIST 1.0t	1.0t big bag, sand 0-2mm, straw 10mm, 600L clay mortar, 60m <sup>2</sup> area with D=1.0cm (*B)
05. ...**	Clay COLOUR PLASTER coarse, NATURALLY MOIST SMALL	0.5t big bag, sand 0-2mm, straw 10mm, 300L clay mortar, 30m <sup>2</sup> area with D=1.0cm (*B)

\*Please refer to the notes on page 28. \*\*36 variants, colours and article no. see on [www.claytec.de](http://www.claytec.de)

## Clay topcoat fine 06

Single-layer, thin-layer plaster for indoors. Clay topcoat fine 06 contains the finest fibres and sands. The material is particularly easy to handle and suitable for very fine surfaces. All even substrates can be very economically transformed into fine clay surfaces. The application thickness is 2-3mm. The material is also used as a substrate for YOSIMA, usually it can be easily applied using the CLAYFIX clay coating material system.



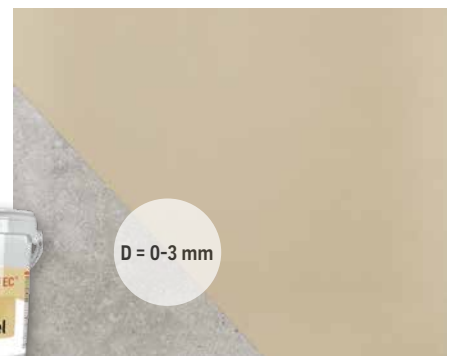
Item no.	Article description	Delivery form, product features
05.113	Clay topcoat FINE 06 DRY in big bag	DIN 18947, 800 kg big bag, sand 0-0.6 mm, 544 L clay mortar, 181 m <sup>2</sup> area at D=0.3 cm (*21)
10.113	Clay topcoat FINE 06 Bagged goods	DIN 18947, 25 kg bag, 48/europallet, sand 0-0.6 mm, 17 L clay mortar, 5.7 <sup>2</sup> area at D=0.3 cm (*C)

\*Please refer to the notes on page 28.

- The new fine clay plaster
- Fine grains and fibres
- Simple and quick to apply

## Clay filling and smoothing putty

Clay filling and smoothing putty for use over sufficiently smooth substrates such as plaster surfaces, plasterboards, gypsum fibreboards etc. in preparation for subsequent top-coating. Also for YOSIMA clay designer plaster and coloured clay filler. The clay filling and finishing putty allows you to smooth out imperfections and holes, and is also suitable for use as an overlay for the entire surface.



Item no.	Article description	Delivery form, product features
13.530	Clay filling and smoothing putty, natural brown	33 buckets/europallet, approx. 7.5 m <sup>2</sup> area at D=1 mm (*22)
13.531	Clay filling and smoothing putty, natural bright	33 buckets/europallet, approx. 7.5 m <sup>2</sup> area at D=1 mm (*22)

\*Please refer to the notes on page 28.

- For filling and smoothing
- For eco-friendly drywall construction
- In natural brown or natural bright
- Good filling properties, slow-drying for long workability

## CLAYTEC Clay paint and Clay roll plaster ready-to-use

Clay paints with and without texture for clay plasters and many other interior surfaces. CLAYTEC Clay paint 13.000 and clay roll plaster 13.100 come ready-to-use and can also be applied by roller. The paint is free from solvents and is non-toxic. Preparatory priming is usually not needed. Slightly uneven surfaces can be smoothed out with CLAYTEC clay roll plaster (0.5 mm applied in one work session).



Item no.	Article description	Delivery form, product features
13.000	CLAYTEC Clay paint Reinweiß 10 l, ready-to-use	30 buckets/europallet, approx. 30 m <sup>2</sup> area depending on substrate (*A)
13.100	CLAYTEC Clay roll plaster Reinweiß 10 l, ready-to-use	30 buckets/europallet, approx. 15 m <sup>2</sup> area depending on substrate (*A)

- Paste-like paint
- Application with a roller
- Smooth or with textured

## Reed fabric 70ST

Plaster base on mixed substrates and wood. The fabrics made of reeds and wire with 70 stems/m was rediscovered and further developed in the 1980's by CLAYTEC. The stalk distances are a perfect match for the coarse grain of the clay plaster mortar. It assists in plaster adhesion on wooden beams and provides strength to unstable walls and thick overlays.



Item no.	Article description	Delivery form, product features
34.001	Reed fabric St70, roll B=2m	70 stems per m, L=10m, 20m <sup>2</sup> (*N)
34.002	Reed fabric St70, roll B=2m	70 stems per m, L=5m, 10m <sup>2</sup> (*N)

\*Please refer to the notes on page 28.

- Natural building material as a plaster base
- Technically ideal for clay plasters
- Versatile uses

## Reinforcement mash

Surface reinforcement for clay adhesion and reinforcement mortar and all clay plasters. This CLAYTEC flax mash is a specially developed flax fabric which is also enriched with casein. It perfectly combines ease of use with environmental friendliness. Jute mash is a pure plant fabric, glass mash is particularly resistant to tearing. Glass mash 112 is especially suitable only for Lemix clay building panels.



Item no.	Article description	Delivery form, product features
35.031	Flax mash, roll B=1m, L=100m	5 mm mesh, L=100m, 100m <sup>2</sup> (*20)
35.034	Flax mash, roll B=1m, L=35m	5 mm mesh, L=35m, 35m <sup>2</sup> (*20)
35.002	Flax mash, roll B=1m	4.5 mm mesh, L=50m, 50m <sup>2</sup> (*20)
35.010	Glass mash, roll B=1m, L=100m	5.5 mm mesh, L=100m, 100m <sup>2</sup> (*20)
35.013	Glass mash, roll B=1m, L=35m	5.5 mm mesh, L=35m, 35m <sup>2</sup> (*20)
35.011	Glass mash 112, roll B=1m, L=100m	112g / m <sup>2</sup> , approx. 5.0 x 5.5 mm mesh, L = 100 m <sup>2</sup>
35.014	Glass mash 112, roll B=1m, L=35m	112g / m <sup>2</sup> , approx. 5.0 x 5.5 mm mesh, L = 100 m <sup>2</sup>

\*Please note point 20 on page 28.

- Flax: Modern and environmentally friendly
- Jute: Traditional and ecologically friendly
- Glass: Standard product with high tensile strength

## Clay joint fillers

Filling material for joints between clay and wood components such as door frames and skirting boards, as well as for rawplug holes. Also suitable for cracks and defects in historical timber-frame beams. Clay joint filler is the ecological alternative to plastic fillers. The dry material is mixed with water and filled into the refillable CLAYTEC cartridges before being used with a caulking device. Residual quantities can be stored indefinitely. The natural brown colour is suitable for naturally coloured clay interior plaster surfaces. The natural bright colour is suitable for white and light clay and lime interior plaster surfaces.



Item no.	Article description	Delivery form, product features
13.520	Clay joint fillers, natural BROWN	1.5 kg bag, dry, approx. 2.5L caulking mass
13.521	Clay joint fillers, natural LIGHT	1.5 kg bag, dry, approx. 2.5L caulking mass
182/595	CLAYTEC cartridge empty	with nozzle and funnel/310ml

- Biological caulk
- For all clay plaster joints
- Rapid and proven
- Durable

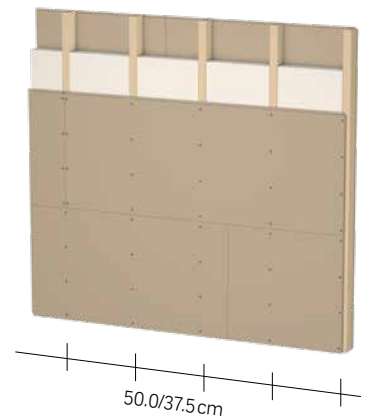
# Clay drywall construction



## CLAYTEC Clayboards

Drywall clayboards for covering wood and metal elements within interior walls, skirting, ceiling and roof surfaces. The CLAYTEC Clayboard is a drywall board and a clay plaster in one. A product developed from craftsman experience, it has been on the market for 20 years. With a density of 700 kg/m<sup>3</sup> it provides clay mass while remaining easy to handle.

**Clay adhesion and reinforcement mortar is suitable for reinforcing all kinds of drywall boards.**



Item no.	Article description	Delivery form, product features
09.004	Clayboards, D=20 mm	60 boards/disposable pallet, each board 0.625×1.50 m, 0.94 m <sup>2</sup> /board (*F)
09.002	Clayboards, D=25 mm	60 boards/disposable pallet, each board 0.625×1.50 m, 0.94 m <sup>2</sup> /board (*F)

\*Please refer to the notes on page 28.

- Natural building materials in Composite
- Moderate weight
- Stability from its reed additives

## LEMIX Heavy clayboards

Drywall clayboards for covering wood and metal elements within interior walls, skirting, ceiling and roof surfaces. The heavy clayboard introduces a lot of clay into the house, with all its positive benefits for the interior climate, especially from a heating perspective. It is easy to cut and allows a broad drywall grid substructure of 62.5 cm in breadth.



Item no.	Article description	Delivery form, product features
09.014	LEMIX HEAVYWEIGHT clayboards, D=22 mm	40 boards/disposable pallet, each board 0.625×1.25 m, 0.78 m <sup>2</sup> /board (*G)
09.015	LEMIX HEAVYWEIGHT clayboards, D=16 mm	60 boards/disposable pallet, each board 0.625×1.25 m, 0.78 m <sup>2</sup> /board (*G)

\*Please refer to the notes on page 28.

- Clay mass for heavyweight applications

## Glas mesh 112

Surface reinforcement for clay adhesive and reinforcement mortars and all clay plasters. CLAYTEC glass fabric is a gauze made of glass fibre yarn/roving, enhanced with polymer finishing for scrim. It is tensile, very fine and particularly easy to process.



35.011/35.014

Item no.	Article description	Delivery form, product features
35.011	Glass mesh 112, roll B=1m, L=100 m	112g / m <sup>2</sup> , approx. 5.0 x 5.5 mm mesh, L = 100 m <sup>2</sup>
35.014	Glass mesh 112, roll B=1m, L=35 m	128g / m <sup>2</sup> , approx. 5.0 x 5.5 mm mesh, L = 100 m <sup>2</sup>

- Surface reinforcement for planking LEMIX clayboard

## Clayboard screws SPAX wall screws

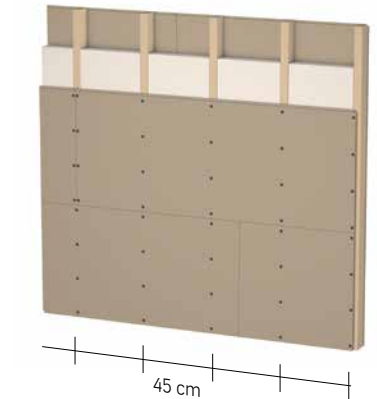
Item no.	Article description	Delivery form, product features
35.120	Clayboard screws, box of 100 pieces	5×50 mm, washer fixed (**8)
35.115	LEMIX Clayboard screws, box of 100 pieces	5×60 mm, washer fixed (**8)
182/400	transport aid LEMIX TH, for transportation clayboards, in the warehouse and on the building site	approx. 80 x 63 cm, aluminium

\*Also available as 35. 125 large box with 1000 pcs. \*\*Please refer to the notes on page 28.



## CLAYTEC HFA N+F

Wood fibreboards (HFA) for planking wood and metal post and beam constructions within interior walls, facing, ceiling and roof surfaces. CLAYTEC HFA N+F are lightweight and breathable. The small size and tongue-and-groove mechanism provide the best workability, even joints in the open areas are possible. They are very reasonably priced, making ecological drywall affordable for all!



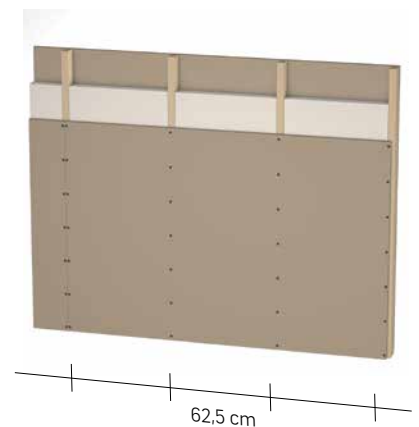
- Ecological wood fibreboard (HFA)
- Lightweight
- Joints possible in open areas
- Small format, ideal for DIY

Item no.	Article description	Delivery form, product features
09.221	CLAYTEC HFA N+F, D=20 mm	112 boards/disposable pallet (1.5×1.2 m), each board 0.60×1.35 m, covered area 0.78 m <sup>2</sup> /board, tongue-and-groove (*H)

\*Please refer to the notes on page 28.

## CLAYTEC HFA maxi

Wood fibreboards (HFA) for planking wood and metal post and beam constructions within interior walls, facing, ceiling and roof surfaces. CLAYTEC HFA maxi boards are lightweight and breathable. The large size of 125 x 1.875 cm ensures efficient work and is perfectly suited for the 62.5 cm drywall grid. With the cost-effective larger boards, ecological drywall construction is affordable for everyone!



- Ecological wood fibreboard (HFA)
- Lightweight
- Large format for professionals

Item no.	Article description	Delivery form, product features
09.226	CLAYTEC HFA maxi, D=25 mm	45 boards/disposable pallet, each board 1.25×1.875 m 2.34 m <sup>2</sup> /board, blunt edges (*I)

\*Please refer to the notes on page 28.

## CLAYTEC Clay dry plasterboard

Dry lining panels made of clay and reeds for local cladding of wood and wooden materials as well as old plasterwork and solid materials. The CLAYTEC clay dry lining panel is used to improve the indoor environment in the drywall construction. It was developed based on practical building experience and has been available on the market for 20 years. Its handy format makes it easy to work with. Clay adhesive and reinforcing mortar is suitable for adhering and reinforcing.



Item no.	Article description	Delivery form, product features
09.010	CLAYTEC Clay dry plasterboard, D=16 mm	120 boards/disposable pallet, each board 0.625×0.625 m, 0.39 m <sup>2</sup> /board (*F)

\*Please refer to the notes on page 28.

- Bioconstructive dry plaster
- Best indoor climate
- Fast and with no moisture upon installation

## CLAYTEC HFA thin

Thin wooden soft fibre topboard as a plaster base on wood and wood-based materials. The boards can be bracketed and/or bonded. This creates a safe and simple substrate on wood for the reinforcing layer of clay adhesive and reinforcing mortar and the subsequent clay finish.



Item no.	Article description	Delivery form, product features
09.008	CLAYTEC wood fibre board THIN, D=8mm	560 boards/disposable pallet, each board 1.10×0.60 m, 0.66 m <sup>2</sup> /board (*F)

\*Please refer to the notes on page 28.

- Ecological wood fibreboard (HFA)
- Clay plaster base layer for timber construction
- Thin and affordable

## Clay adhesive and reinforcing mortar

Clay adhesive and reinforcing mortar for reinforcement layers on clayboards as well as wood fibre topboards and interior insulation panels. Clay adhesive and reinforcement mortar consists of clay and cellulose components. This guarantees the best working even with thin application. With a novel high compressive strength of 3.9MPa for clay mortar as well as an adhesive strength of 0.85 MPa, clay adhesive and reinforcing mortar can ensure the strength of the entire construction. It provides a substrate for CLAYTEC fine clay topcoat plasters and YOSIMA. With good preparation it can also be applied using the CLAYFIX clay coating material system and CLAYTEC Clay paint ready-to-use.



Item no.	Article description	Delivery form, product features
13.555	Clay adhesive and reinforcing mortar, bagged goods	COMPRESSIVE STRENGTH 3.9N/mm <sup>2</sup> , ADHESIVE STRENGTH 0.85 N/mm <sup>2</sup> , 25 kg bag, 48/europallet, 17L mortar, 5 m <sup>2</sup> area (*C)

\*Please refer to the notes on page 28.

- Powerful adhesion properties, pressure-resistant
- Supple
- Remains workable long after application



# Timber-frame restoration



## Larch triangular battens and Oak triangular battens

Larch- and Oak wood battens for connecting between masonry and timber-frame beams. The cross section is sufficiently flexible and adaptable also for old and irregular beams. The height corresponds exactly to the thickness of the gap closing clay mortar joint.



Item no.	Article description	Delivery form, product features
00.050	Larch triangular battens	12 batten bundle, H=12 mm, L=2 m, 1 bundle for each pallet of clay bricks (*K)
00.051	Oak triangular battens	12 batten bundle, H=12 mm, L=2 m and 1 m, 1 bundle for each pallet of clay bricks (*K)

\*Please refer to the notes on page 28.

- Optimal cross section
- Weather resistant
- Flexible, easy to nail

## Lightweight clay bricks (struck to size)

Lightweight stricken clay brick of the application class Ia (= approved for timber-frame masonry work). The composition as well as the manufacturing technique make it very resistant to moisture and frost. The historical normal format (NF) lies well in the hand, the size is just right for timber-frame construction. The 1200 NF clay brick can be stricken to size and cleaved very easily. As a mortar, clay masonry mortar is very suitable for the externally used coarse lime basecoat render with hair.



Item no.	Article description	Delivery form, product features
07.011	NF 1200 lightweight clay brick	DIN 18945, AC Ia, 416 pieces/disposable pallet, density 1200 kg/m <sup>3</sup> , brick 24.0×11.5×7.1 cm (*L)
07.012	NF 800 lightweight clay brick	DIN 18945, AC Ia, 416 pieces/disposable pallet, density 800 kg/m <sup>3</sup> , brick 24.0×11.5×7.1 cm (*L)
07.004	2DF 900 lightweight clay brick	350 pieces/disposable pallet, density 900 kg/m <sup>3</sup> , brick 24.0×11.5×11.3 cm (*L)
07.015	3DF 900 lightweight clay brick	240 pieces/disposable pallet, density 900 kg/m <sup>3</sup> , brick 24.0×17.5×11.3 cm (*L)

\*Please refer to the notes on page 28.

- The timber-frame brick classic
- Optimal drying properties
- High moisture resistance

## Lightweight clay masonry mortar

Masonry mortar for lightweight clay bricks used for timber-frame infills and interior shells. The wood-chip component allows adaptation to the material composition of the lightweight clay bricks, with the density and physical properties also being adjusted in this way. The bagged material (dry mortar) never expires.

Item no.	Article description	Delivery form, product features
05.022	LIGHTWEIGHT clay masonry mortar, NATURALLY MOIST 1.0t	DIN 18946, 1.0t big bag, density 1400 kg/m <sup>3</sup> , 700L masonry mortar (*B)
05.222	LIGHTWEIGHT clay masonry mortar, NATURALLY MOIST SMALL	DIN 18946, 0.5t big bag, density 1400 kg/m <sup>3</sup> , 350L masonry mortar (*B)
10.122	LIGHTWEIGHT clay masonry mortar, bagged goods	DIN 18946, 25 kg bag, 48/europallet, density 1400 kg/m <sup>3</sup> , 20.5 L masonry mortar (*C)

\*Please refer to the notes on page 28.



- Mortar for lightweight clay bricks
- Structurally adapted
- For timber-frame masonry

## Oak stakes and Clay timber struts

Sawn oak battens for lattices in infill sections or slatted ceilings and as a substructure for wattle. The traditional clay infilling techniques are applied for conservation purposes, and often they are also more practical than masonry, e.g. where there are very irregular sections or low beams. The oak wood is hard and resistant.

**Clay timber struts** are ready-wrapped and pre-dried with straw clay. They are available in different lengths.



Item no.	Article description	Delivery form, product features
30.001	Oak stakes, SHARP-EDGED	D=26 mm, B=60 mm, L=4 m and shorter (*K)
30.002	Oak stakes, OBLIQUE-EDGED	D=26 mm, B=60 mm, L=4 m and shorter (*K)
30.003/...	Clay timber struts	Diameter of wrap-around jacket approx. 12-14 cm, 50 Stk/EUR-Pal.

- Historically authentic
- Stable and weather resistant
- As finished timber struts

\*Please refer to the notes on page 28.

## Willow rods

Split willow rods for wattle in timber-frame infills. The traditional clay infill techniques are applied for historical building conservation and restoration. These are often not only more practical than masonry, they are also a lot of fun. The original way of working is creative and satisfying, the naked timber frame slowly becomes a house. The semi-circular cross-section makes the rods flexible and elastic.



Item no.	Article description	Delivery form, product features
31.001	Willow rods	40 rod bundle, D up to 2.5 cm, L approx. 2,7 m, 3-4 m <sup>2</sup> timber-frame area (measured over columns) (*3)

- Historically authentic
- Flexible and perfect for crafting

\*Please refer to the notes on page 28.

## Straw clay

Straw clay paste for restorations and renovations of infills and timber-frame ceiling filling. "Beaten clay" is the archetypal clay building material used for historical timber-frame construction. The straw clay mixture was generated with animal power and was worked in by the claysmith. The waterlogged earth mass is best prepared using a beating mixer and applied using a plastic trowel onto the wattle or lattice. Straw clay ANTIK contains straw that is particularly long.



Item no.	Article description	Delivery form, product features
04.004	Clay straw, NATURALLY MOIST 1.0t	1.0t big bag, 700L plastic clay straw (*B)
04.005	Straw clay ANTIK, NATURALLY MOIST 1.0t	1.0t big bag, 700L plastic clay straw (*B)

- Historically authentic
- Plastic and hard

\*Please refer to the notes on page 28.

## Stainless steel plaster mesh

Plaster mesh for severely weathered timber-frame infill sections. Stainless steel mesh plaster lath is rust free and specially formed. The recesses allow the necessary distance to be held from the plaster base. It is held in place using facade fixing screws. With unusually weathered and exposed timber-frame construction it offers additional security for ensuring that lime render stays attached.



Item no.	Article description	Delivery form, product features
35.100	Special clay base mesh od stainless steel roll B=1m	16 mm mesh, L=5 m, 5 m <sup>2</sup> , formed (*N)
35.110	Facade screws of stainless steel, Box of 100 pieces	D=5.5 mm, L=65 mm, 15-20 pieces/m <sup>2</sup>

- Sureness on problematic surfaces
- Rust-free stainless steel
- Specially formed

\*Please refer to the notes on page 28.

## Lime renders and coatings (exteriors)

Gräfix plasters are cement-free breathable lime mortars for conserving and restoring historical buildings. They are ideal for CLAYTEC clay substrates. **Coarse lime basecoat render with hair** is coarse-grained and contains badger hair. It is applied directly on clay infill panels in timber-frame constructions. **Fine lime thin-coat render** is a topcoat render for use on lime (outdoors) or clay (indoors). **Lime paint** serves as weather protection for exterior lime rendering, and it is also suitable for interior clay plasters. For other lime products, see the product sheet.



Item no.	Article description	Delivery form, product features
21.200	gräfix 61 lime basecoat render HAIR COARSE	30 kg bag, 40/europallet, sand 0-4 mm 23 L clay mortar, 1.53 m <sup>2</sup> area at D=1.5 cm (*C)
21.350	gräfix 61 Lime thin coat render FINE	30 kg bag, 40/europallet, sand 0-0.8 mm 24 L clay mortar, 8 m <sup>2</sup> area at D=0.3 cm (*C)
21.525	gräfix 680 lime paint, 10L bucket	32 buckets/europallet, pasty liquid, approx. 22 m <sup>2</sup> with 3 coats depending on substrate (*E)
21.300	gräfix 61 lime basecoat render (special additives)	30 kg bag, 40/europallet, sand 0-1.6 mm 23 L clay mortar, 1.53 m <sup>2</sup> area at D=1.5 cm (*C)
21.400	gräfix 66 K lime render smooth (special additives)	25 kg bag, 40/europallet 24 L plaster mortar, 24 m <sup>2</sup> area at D=0.1 cm (*C)

- Traditional lime render mortar
- Pure and cement-free
- Suitable for clay construction

\*Please refer to the notes on page 28.

## Dry earth fill material

Dry, pourable fill material. **Dry earth ceiling fill material** consists of pure clay granules. **Dry clay wood fill material** consists of clay mixed with softwood chips.



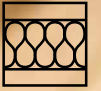
Item no.	Article description	Delivery form, product features
03.061	Dry earth fill material, big bag	1.0 t big bag, GRANULES, grain up to 0-25 mm, Grain group/oversized grains up to 40 mm, density approx. 1,350 kg/m <sup>3</sup> , provides approx. 0.75 m <sup>3</sup> of building material (*O)
03.070	Clay wood dry fill material LIGHT, big bag	300 kg big bag, clay and softwood chips, density approx. 275 kg/m <sup>3</sup> , provides approx. 1.0 m <sup>3</sup> building material (*R)

- Dry and pourable
- Heavy or light
- Coarse and fine-grained mixed composition

\*Please refer to the notes on page 28.

---

# Interior insulation



## Lightweight clay insulation plaster

Single or multilayer basecoat plaster for interior application. Why waste the space under your interior insulation panels? In comparison to normal clay plaster mortars, layers of clay insulating plaster markedly improve the transport of heat through the wall. Clay insulating plaster is also a problem solver in many situations, e.g. in the case of bay windows or local minimal insulation, with applications of up to 35 mm per coat. It can be used for all sorts of coarse and fine CLAYTEC clay topcoat plasters.



Item no.	Article description	Delivery form, product features
05.036	Lightweight clay INSULATION PLASTER, NATURALLY MOIST 0.9t	0.9t big bag, pumice 0-5mm, plant Fine fibres, straw, 675 L clay mortar, 45m <sup>2</sup> area with D=1.5cm (*B)
05.236	Lightweight clay INSULATION PLASTER, NATURALLY MOIST SMALL	0.45t big bag, pumice 0-5mm, plant Fine fibres, straw, 340L clay mortar, 23m <sup>2</sup> area with D=1.5cm (*B)

\*Please refer to the notes on page 28.

- Lightweight and thermally insulating
- For patched minimal insulation
- As a substrate for interior insulation panels

## Reed panels

Construction panels made of wire-quilted reeds for interior walls and for the improvement of thermal insulation and the surface temperature of exterior walls. The traditional natural insulation product has been used for many years for simple interior insulation. Its properties and materiality are especially well suited for the conservation and restoration of historical buildings.



Item no.	Article description	Delivery form, product features
34.010	Reed lightweight construction boards, D=50mm	25 boards/europallet, 1x2m, 2m <sup>2</sup> /board (*S)
34.020	Reed lightweight construction boards, D=20mm	50 boards/europallet, 1x2m, 2m <sup>2</sup> /board (*S)

\*Please refer to the notes on page 28.

- Natural building materials for interior insulation
- Strong and stable

## Clay adhesive and reinforcing mortar

Clay adhesive and reinforcing mortar for reinforcement layers on clayboards as well as wood fibre topboards and interior insulation panels. The clay and cellulose components guarantee the best workability even with thin applications. With a novel high compressive strength of 3.9MPa and an adhesive strength of 0.85MPa which is novel for clay mortar, clay adhesive and reinforcing mortar ensures the strength of the entire construction. It provides a substrate for CLAYTEC fine clay topcoat plasters and YOSIMA. With good preparation it can also be easily applied with a CLAYFIX clay plaster coating material system.



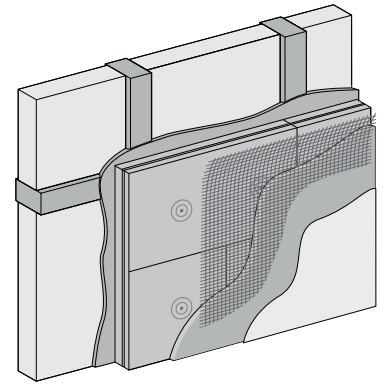
Item no.	Article description	Delivery form, product features
13.555	Clay adhesive and reinforcing mortar, bagged goods	COMPRESSIVE STRENGTH 3.9N/mm <sup>2</sup> , ADHESIVE STRENGTH 0.85N/mm <sup>2</sup> , 25 kg bag, 48/europallet, 17L mortar, 5 m <sup>2</sup> area (*C)

\*Please refer to the notes on page 28.

- Supple
- Strongly adhesive
- Pressure-resistant

## CLAYTEC HFD interior insulation board

Wood fibre insulation board for interior insulation of timber-frame houses and all other historical buildings. CLAYTEC HFD interior insulation boards are glued locally in a clay plaster levelling course or fixed with clay adhesive and reinforcing mortar. The soft boards decouple deformations in the construction from the interior plaster. They are inexpensive and suitable for many types of wall.



Item no.	Article description	Delivery form, product features
09.440	CLAYTEC HFD internal, D=40mm	84 boards/disposable pallet (1.02×1.20 m), each board 0.40×1.02 m, covered area 0.39m <sup>2</sup> /board, tongue-and-groove (*H)
09.460	CLAYTEC HFD internal, D=60mm	57 boards/disposable pallet (1.02×1.20 m), each board 0.40×1.02 m, covered area 0.39m <sup>2</sup> /board, tongue-and-groove (*H)
09.480	CLAYTEC HFD internal, D=80mm	42 boards/disposable pallet (1.02×1.20 m), each board 0.40×1.02 m, covered area 0.39m <sup>2</sup> /board, tongue-and-groove (*H)

\*Please refer to the notes on page 28.

- Ecological interior insulation
- Ideal for masonry and timber-frame restoration
- Best moisture management, very breathable

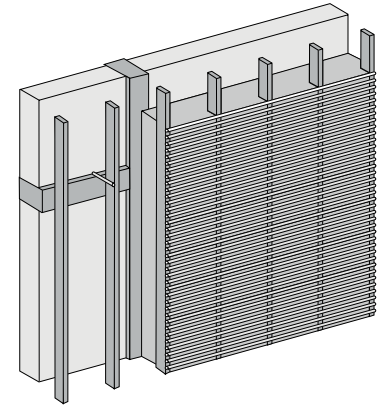
### Fixing medium

Item no.	Article description	Delivery form, product features
35.132/60	Screws L=60mm, box of 200 pieces	D=6 mm, 2 pieces/board (6 to 8 pieces/m <sup>2</sup> )
35.132/80	Screws L=80mm, box of 200 pieces	D=6 mm, 2 pieces/board (6 to 8 pieces/m <sup>2</sup> )
35.130/100	Screws L=100mm, box of 100 pieces	D=6 mm, 2 pieces/board (6 to 8 pieces/m <sup>2</sup> )
35.130/120	Screws L=120mm, box of 100 pieces	D=6 mm, 2 pieces/board (6 to 8 pieces/m <sup>2</sup> )
35.130/140	Screws L=140mm, box of 100 pieces	D=6 mm, 2 pieces/board (6 to 8 pieces/m <sup>2</sup> )
35.140/100	Screw rawlplugs L=100 mm, box of 100 pieces	D=8 mm, 2 pieces/board (6 to 8 pieces/m <sup>2</sup> )
35.140/120	Screw rawlplugs L=120 mm, box of 100 pieces	D=8 mm, 2 pieces/board (6 to 8 pieces/m <sup>2</sup> )
35.140/140	Screw rawlplugs L=140 mm, box of 100 pieces	D=8 mm, 2 pieces/board (6 to 8 pieces/m <sup>2</sup> )
35.140/160	Screw rawlplugs L=160 mm, box of 100 pieces	D=8 mm, 2 pieces/board (6 to 8 pieces/m <sup>2</sup> )
35.150	Insulation plate, box of 100 pieces	D=60mm, 2 pieces/board (6 to 8 pieces/m <sup>2</sup> )

## Light clay

**Woodchip light clay** is added wet to interior shells by pouring, for example if exterior walls on their inner sides jut forwards or backwards by some distance, or if installations need to be integrated. Woodchip light clay is ecologically friendly and forms stable joints.

**Lightweight expanded clay** dries faster and is not flammable.



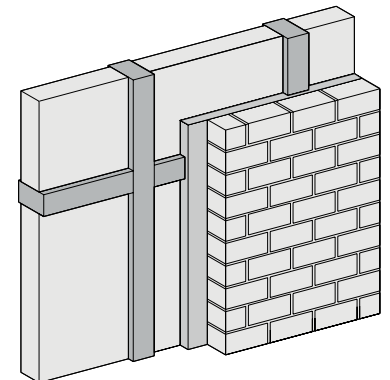
Item no.	Article description	Delivery form, product features
03.011	Wood light clay	0.9t big bag, density approx. 10% compacted 600kg/m <sup>3</sup> , provides approx. 0.9m <sup>3</sup> wall building material (*T)
03.040	Light expanded clay	1.0t big bag, grains of 4-16mm, density approx. 700kg/m <sup>3</sup> , provides approx. 1.0m <sup>3</sup> wall building material (*U)

\*Please refer to the notes on page 28.

- Pouring technique for varying thicknesses
- Organic or mineral-based
- Sure fitting

## Lightweight clay brick (moulded)

Particularly lightweight clay brick of application class II (= for interior masonry) with a thermal insulating effect. 700 2DF clay brick provides a moderate interior insulation of timber-framed houses and all other historical buildings if laid with conventional masonry techniques. As a mortar, lightweight clay masonry mortar is highly suitable.



Item no.	Article description	Delivery form, product features
07.013	2DF 700 lightweight clay brick	350 pieces/disposable pallet, density 700kg/m <sup>3</sup> brick 24.0×11.5×11.3cm (*M)

\*Please refer to the notes on page 28.

- Conventional bricklaying technique
- Lightweight insulation brick

## Lightweight clay masonry mortar

Masonry mortar for lightweight clay bricks used for timber-frame infills and interior shells. The wood-chip component allows adaptation to the material composition of the lightweight clay bricks, with the density and physical properties also being adjusted in this way. The bagged material (dry mortar) never expires.



Item no.	Article description	Delivery form, product features
05.022	LIGHTWEIGHT clay masonry mortar, NATURALLY MOIST	DIN 18946, 1.0t big bag, density 1,400 kg/m <sup>3</sup> , 700L masonry mortar (*B)
05.222	LIGHTWEIGHT clay masonry mortar, NATURALLY MOIST SMALL	DIN 18946, 0.5t big bag, density 1,400 kg/m <sup>3</sup> , 350L masonry mortar (*B)
10.122	LIGHTWEIGHT clay masonry mortar, bagged goods	DIN 18946, 25 kg bag, 48/europallet, density 1,400kg/m <sup>3</sup> , 20.5L masonry mortar (*C)

\*Please refer to the notes on page 28.

- Mortar for lightweight clay bricks
- Structurally adapted
- For timber-frame masonry



---

Masonry  
Rammed earth  
Terrazzo clay



## Clay brick NF 1800 (struck to size)

Hammered clay brick of the application class Ib (= approved for load-bearing walls). Can one build load bearing walls with clay? Yes, with the clay brick 1800 NF quality product. 30 years ago CLAYTEC developed this brick with the properties of the pre-industrial punch-mould technique. It is the only one brick of this type on the market. The normal format (NF) makes it particularly suitable for small-scale repairs of historic solid clay buildings. **Heavy clay masonry mortar is suitable as a mortar.**



- Solid and right for the job
- Can be used for load-bearing masonry
- For solid clay building renovation and restoration

Item no.	Article description	Delivery form, product features
07.002	NF 1800 heavyweight clay brick	DIN 18945, AC Ib, 416 pieces/disposable pallet, density 1,800 kg/m <sup>3</sup> brick 24.0×11.5×7.1cm (*L)

\*Please refer to the notes on page 28.

## Clay brick AC II (extruded clay brick, Grünling)

Heavyweight extruded clay bricks of application class II, for drywall construction and interior masonry. These clay bricks were formerly known as Grünling or Rohling. The flat DF bricks are often used for dry built-in ceiling layers and stacking shells. The clay bricks NF, 2DF are primarily used for clay masonry.



- Reasonably priced
- Various formats
- For drywall construction and masonry

Item no.	Article description	Delivery form, product features
06.010	Clay brick (Grünling) DF	DIN 18945, AK II, 448 pieces/disposable pallet, density 1,800 kg/m <sup>3</sup> brick 24.0×11.5×5.2cm (*L)
06.012	Clay brick (Grünling) NF	DIN 18945, AC II, 336 pieces/disposable pallet, density 1,800 kg/m <sup>3</sup> brick 24.0×11.5×7.1cm (*L)
06.003	Clay brick (Grünling) 2DF	DIN 18945, AC II, 224 pieces/disposable pallet, density 1,600 kg/m <sup>3</sup> brick 24.0×11.5×11.3cm (*L)

\*Please refer to the notes on page 28.

## Heavy clay masonry mortar

Masonry mortar for heavy clay bricks. The material has no organic additives and is approved for load-bearing brickwork. Because of its good pourability, clay masonry mortar is also used for ceiling fills.

Item no.	Article description	Delivery form, product features
05.020	HEAVYWEIGHT clay masonry mortar, 1.0t	DIN 18946, 1.0t big bag 500L masonry mortar (*B)
05.220	Heavy clay masonry mortar, SMALL	DIN 18946, 0.5t big bag 250L masonry mortar (*B)

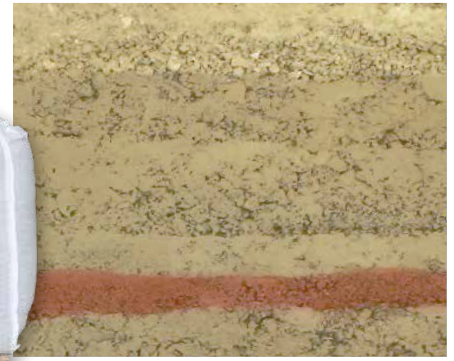
\*Please refer to the notes on page 28.



- Masonry mortar for heavy clay bricks
- Can be used for load-bearing masonry
- For timber-frame masonry

## Rammed earth

**Rammed earth** ready mix for walls and floors. Rammed earth construction is clay construction in its archaic and pure form. The raw material directly becomes a monolithic construction element. The main reason that this ancient construction technique was rediscovered was because of the aesthetic and architectural expression of the heavyweight monolithic components and their surfaces. **Natural fine rammed earth** is for covering rammed earth floors.



- Archaic and pure clay construction
- Fascinating appearance
- For walls and floors

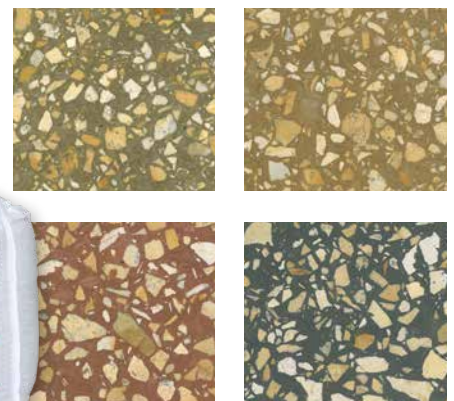
Item no.	Article description	Delivery form, product features
02.004	Natural rammed earth	1.0t big bag, grain 0-16 mm, provides approx. 0.45 m <sup>3</sup> wall building material (*U)
02.008	Natural FINE rammed earth	1.0t big bag, grain 0-8 mm, provides approx. 0.45 m <sup>3</sup> wall building material (*U)
02.100	Natural WHITE rammed earth	1.0t big bag, grain 0-16 mm, provides approx. 0.45 m <sup>3</sup> wall building material (*U)
02.200	Natural YELLOW rammed earth	1.0t big bag, grain 0-16 mm, provides approx. 0.45 m <sup>3</sup> wall building material (*U)
02.400	Natural RED rammed earth	1.0t big bag, grain 0-16 mm, provides approx. 0.45 m <sup>3</sup> wall building material (*U)
02.600	Natural GREY rammed earth	1.0t big bag, grain 0-16 mm, provides approx. 0.45 m <sup>3</sup> wall building material (*U)

\*Please refer to the notes on page 28.



## Terrazzo clay

Ready mix for terrazzo clay floors, also suitable for underfloor heating systems. Terrazzo clay is processed using the traditional and elegant Italian floor grinding technique. The material is unique in its look and feel. The colours offered make every floor an experience. Terrazzo clay is a special design material, and its processing is also demanding. Please do not hesitate to contact us!



- New technology!
- For individual room design

Item no.	Article description	Delivery form, product features
04. ...**	Terrazzo clay	1.0t big bag, grain 0-16 mm, provides approx. 0.60 m <sup>3</sup> building material (*U)

\*\*Various colour variants, please talk to us about our range of products.

\*Please refer to the notes on page 28.

## Additional products

Item no.	Article description	Delivery form, product features
35.006	Jute joint reinforcement, roll B=10cm	4.5 mm mesh, glazed, L=50 m
35.015	Jute joint reinforcement, roll B=8cm	5.5 mm mesh, L=100 m
03.052	Pumice light clay	1.0t big bag, density approx. 15% compacted 1,000 kg/m <sup>3</sup> , provides approx. 0.85m <sup>2</sup> building material (*U)
01.003	Building clay broken, NATURALLY MOIST	1.0t big bag, grain up to 5 mm (*B)
01.002	Milled construction clay Dry in big bag	1.0t big bag, grain up to 0.5 mm (*21)
10.101	Milled construction clay, bagged goods	25 kg bag, 48/europallet, grain up to 0.5 mm (*C)

\*Please refer to the notes.

## Notes

**A= 2, 22; B= 1, 20; C= 5, 23; E= 2, 20; F= 7, 22; G= 7, 20; H= 3, 7, 10, 23; I= 3, 7, 23; K= 3, 11; L= 4, 6, 23; M= 6, 23; N= 3, 20; O= 15, 21; P= 5, 15, 23; R= 3, 5, 21; S= 3, 5, 20; T= 1, 14, 21; U= 1, 21**

- 1 The product must be stored protected from frost (to maintain its workability). Loss of quality due to frosting and thawing is not to be feared. Frost-free shipping with thermal hood is available (€39.50 per shipment, no crane unloading).
- 2 Store protected from frost! Loss of quality can occur due to frosting and thawing! Frost-free shipping with thermal hood is available (€39.50 per shipment, no crane unloading).
- 3 For these very lightweight products, the **chargeable weight** is not the actual weight because of the volume.
- 4 For quantities from 12.0t, please ask about for your special conditions, as we deliver directly from the manufacturer.
- 5 The purchase price applies to full pallets! For opened pallets we charge a surcharge of €0.48 for every 25 kg bag, and €0.55 for every 30 kg bag or 1m<sup>2</sup> reed board.
- 6 For clay bricks delivery is only possible with full pallets.
- 7 For the unstacking and repacking of clayboards, HFD boards and reed boards, we charge €15.00 per order.
- 8 Clayboard screws = SPAX-rear wall screws, insulation board screws = galvanised SPAX screws, insulation board screw rawlplugs = EJOT SDF-S plus 8 UB, insulation board insulating plate = EJOT IT-Z 60/8 S
- 10 The m<sup>2</sup> for purchase and sales prices are determined on the basis of the external dimensions, as is usual with N + F plates. CLAYTEC HFA N+F D20=0.81m<sup>2</sup> (0.60x1.35m). CLAYTEC HFD Innendämmplatte=0.41m<sup>2</sup> (0.40x1.02m).
- 11 Only as additional loads, no separate delivery possible.
- 12 10% quantity discount from each 10th bag.
- 14 Use the product within 2 weeks.
- 15 Check the installation moisture levels to be on the safe side.
- 20 Pallets or big bags are not stackable.
- 21 A total of 2 big bags are stackable as long as they stand securely, the weight is distributed evenly, and europaletts are placed between them.
- 22 A total of 2 pallets are stackable as long as they stand securely and the weight is distributed evenly.
- 23 A total of 3 pallets are stackable as long as they stand securely and the weight is distributed evenly.

---

# Japanese trowels



## Tools: Japanese trowels

In Japan, clay plaster has a centuries-old tradition. The surface design of the clay walls is of prime importance. The best evidence for the cultural significance of this craftsmanship is provided by the multitude of tools with which Japanese plasterers apply, smooth and craft the clay.

We offer an extensive selection of Japanese trowels and stucco tools. A special focus is our range of trowels for the professional crafting of edges, gorges and plaster finishes.

Item	Product	Length x breadth mm
181/01210	Basecoat plaster trowel ARA-GOTE, L210	210×65-80
181/01240	Basecoat plaster trowel ARA-GOTE, L240	240×80-95
181/01300	Basecoat plaster trowel ARA-GOTE, L300	300×95-05
181/63180	Fine plaster trowel (ridged profile) SHIAGE-GOTE, L180	180×48-55
181/63240	Fine plaster trowel (ridged profile) SHIAGE-GOTE, L240	240×52-65
181/58180	Fine plaster trowel (flat profile) SHIAGE-GOTE, L180	180×50-58
181/58240	Fine plaster trowel (flat profile) SHIAGE-GOTE, L240	240×60-70
181/05210	Fine plaster trowel NAMIKESHI, L210	210×45-55
181/61210	Fine plaster smoother (flat profile) KAKU-GOTE, L210	21066-72
181/61240	Fine plaster smoother (flat profile) KAKU-GOTE, L240	240×75-82
181/61300	Fine plaster smoother (flat profile) KAKU-GOTE, L300	300×90-98
181/04210	Plastic trowel SHIAGE-GOTE (green), L210	210×56-64
181/04240	Plastic trowel SHIAGE-GOTE (green), L240	240×58-70
181/06210	Plastic trowel SHIAGE-GOTE (blue), L210	210×72-74
181/06240	Plastic trowel SHIAGE-GOTE (blue), L240	240×74-78
181/26406	Ridged trial round MENBIKI-GOTE UCHIMARO, R6	120×diameter 6
181/26415	Ridged trial round MENBIKI-GOTE UCHIMARO, R15	120×diameter 15
181/26430	Ridged trial round MENBIKI-GOTE UCHIMARO, R30	120×diameter 30
181/32406	Collared trowel round MENBIKI-GOTE SOTOMARU, R6	120×diameter 6
181/32415	Collared trowel round MENBIKI-GOTE SOTOMARU, R15	120×diameter 15
181/32430	Collared trowel round MENBIKI-GOTE SOTOMARU, R30	120×diameter 30
181/38406	Ridged trowel with bevel MENBIKI-GOTE UCHIMARU KAKUMEN, F6	120×bevel 6
181/38415	Ridged trowel with bevel MENBIKI-GOTE UCHIMARU KAKUMEN, F15	120×bevel 15
181/38430	Ridged trowel with bevel MENBIKI-GOTE UCHIMARU KAKUMEN, F30	120×bevel 30
181/40135	135° trowel MENBIKI-GOTE	120×35°, diameter 9
181/40090	90° trowel MENBIKI-GOTE	120×90°, diameter 9
181/12075	Willow leaf trowel YANAGIBA-GOTE, L75	75×24-38
181/12120	Willow leaf trowel YANAGIBA-GOTE, L120	120×32-54
181/18103	Pointed trowel smooth, soft NAMITORI-GOTE, L90	90×14-21
181/98160	Plaster mortar board, right-handed	450×300, right-handed
181/98170	Plaster mortar board, left-handed	450×300, left-handed
181/98150	Trowel care set	Treatment oil and cotton cloth



Further information: CLAYTEC technical sheet for Japanese trowels and on <https://www.claytec.de/en/products/Japanese-trowels>

## Ranges, primers, plasters and coatings

Priming and coating areas in m<sup>2</sup>, plastering areas depending on the application thickness in cm

Product	Delivery form	Application	Product	Delivery form	0.2	Filler	Coating
Deep sealer and binder	10L canister	50	YOSIMA Clay designer plaster	500 kg big bag	150		
	1L bottle	5.0		20 kg bucket	6.0		
RED	10L bucket	30		2 kg bag	0.6		
	5L bucket	15	YOSIMA Coloured clay filler	5 kg bucket		6.5	
YELLOW	10L bucket	50		1.0 kg bag		1.3	
	5L bucket	25	CLAYFIX Clay coating	10 kg bucket			60
WHITE	10L bucket	100		1.5 kg bag			9.0
	5L bucket	50					
	1L bucket	10					

Product	Delivery form	3	2	1.5	1	0.6	0.3	0.2	Application
Clay undercoat plaster with straw	1.0t big bag, earth moist	20.0	30.0	40.0	60.0				
	0.5t big bag, earth moist	10.0	15.0	20.0	30.0				
	1.0t big bag, dry	20.8	31.3	41.7	62.5				
	25 kg bag	0.6	0.8	1.1	1.7				
Clay insulation plaster, naturally-moist	0.9t big bag, earth moist	22.5	33.8	45.0	67.5				
	0.45t big bag, earth moist	11.3	17.0	22.7	34.0				
Clay plaster MINERAL 20	1.0t big bag, dry			36.0	54.0	90.0			
	1.0t big bag, earth moist			33.3	50.0	83.3			
	0.5t big bag, earth moist			16.7	25.0	41.7			
	25 kg bag			0.9	1.4	2.25			
Clay plaster SanReMo	0.8t big bag, dry				54.4	90.7	181.3		
	25 kg bag				1.7	2.8	5.7		
Clay topcoat plaster coarse with straw	1.0t big bag, earth moist				60.0	100.0			
	0.5t big bag, earth moist				30.0	50.0			
	1.0t big bag, dry				62.5	104.2			
	25 kg bag				1.7	2.8			
Clay colour plaster coarse, with straw	1.0t big bag, earth moist				60.0	100.0			
	0.5t big bag, earth moist				30.0	50.0			
Clay topcoat fine 06	800 kg big bag, dry						181.3	272.0	
	25 kg bag (06)						5.7	8.5	
Clay filling and smoothing putty	10 kg bucket						2.5	3.8	

## Material needs for bricks and mortar

Brick and mortar needs in piece numbers or pieces/litre l depending on wall thickness

Brick format	Dimensions in cm	11 <sup>5</sup>	17 <sup>5</sup>	24	36 <sup>5</sup>
DF (thin format)	24.0×11.5×5.2	66 pieces/29L		132 pieces/70l	198 pieces/109l
NF (normal format)	24.0×11.5×7.1	50 pieces/27L		99 pieces/65L	148 pieces/101L
2DF (double thin format)	24.0×11.5×11.3	33 pieces/20L		66 pieces/50L	99 pieces/80L
3DF (triple thin format)	24.0×17.5×11.3		33 pieces/29L	45 pieces/42L	

# CLAYTEC®

Building with Clay

Your CLAYTEC dealer:

CLAYTEC GmbH & Co. KG

Nettetalter Straße 113-117  
41751 Viersen-Boisheim

Phone: +49 (0)2153 918-0  
Fax: +49 (0)2153 918-18

E-Mail: [service@claytec.com](mailto:service@claytec.com)  
[www.claytec.de/en](http://www.claytec.de/en)

Distribution in Austria:

CLAYTEC Lehmbaumstoffe GmbH

Stranach 6  
A-9842 Mörttschach

Phone: +43 (0) 676 430 45 94

E-Mail: [info@claytec.at](mailto:info@claytec.at)